

# MARINE EXHAUST COMPONENTS



## CAST IRON ADAPTERS & REDUCERS

**BARR**  
MARINE BY EDM

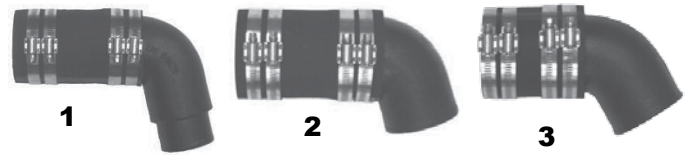
### 30° ADAPTERS



Item #	Part #	Adapts:
1	20-0088PKG	3" to 2-1/2"
2	20-0089PKG	3" to 3"

**BARR**  
MARINE BY EDM

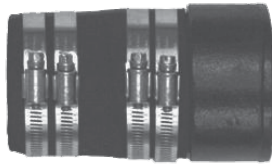
### 90° ADAPTERS



Item #	Part #	Adapts:
1	20-0086PKG	3" to 2-1/2"
2	20-0087PKG	3" to 3"
3	20-0092PKG	3" to 3" (55°)

**BARR**  
MARINE BY EDM

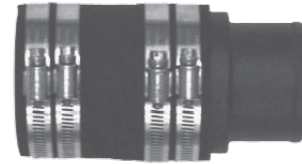
### REDUCER



Item #	Part #	Adapts:
1	20-0084PKG	3-1/2" to 3"

**BARR**  
MARINE BY EDM

### REDUCER



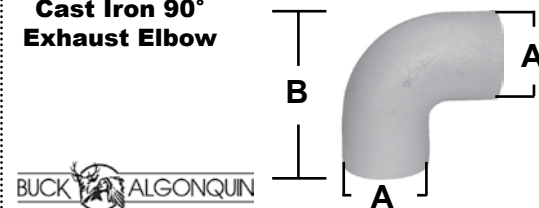
Item #	Part #	Adapts:
1	20-0085PKG	3" to 2-1/2"

### Cast Iron Exhaust "Y" Connector



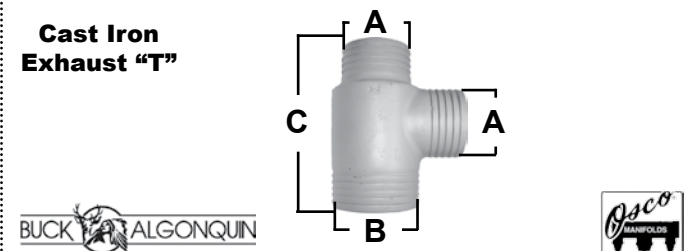
Part #	(A) "Y" end	(B) Straight end	(C) Overall length
BUC40EC250300	2-1/2"	3"	9-1/2"
BUC40EC300300	3"	3"	9-1/2"
BUC40EC300350	3"	3-1/2"	9-1/2"
BUC40EC300400	3"	4"	9-1/2"
BUC40EC300450	3"	4-1/2"	9-1/2"
BUC40EC300500	3"	5"	9-1/2"

### Cast Iron 90° Exhaust Elbow



Part#	(A) Hose Size	Angle	(B) Length
BUC40EE30090	3"	90°	6-1/2"
BUC40EE40090	4"	90°	11"

### Cast Iron Exhaust "T"



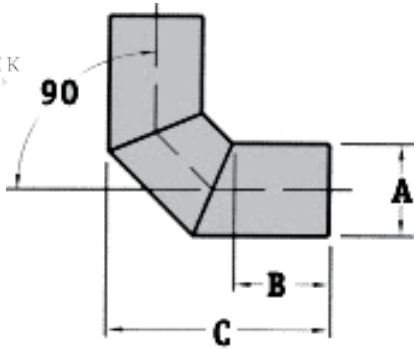
Part#	(A) Hose Size	(B) Hose Size	(C) Length
OSC3040T	3"	4"	9"
BUC40EC4040B	4"	4"	9"



# MARINE EXHAUST COMPONENTS

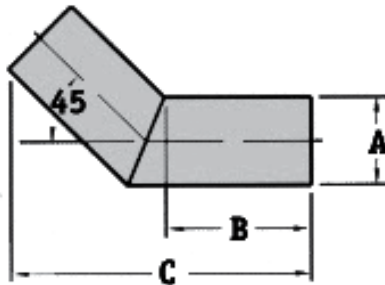
FIBERGLASS EXHAUST CONNECTORS, COUPLERS, & ELBOWS

## 90° Exhaust Elbow



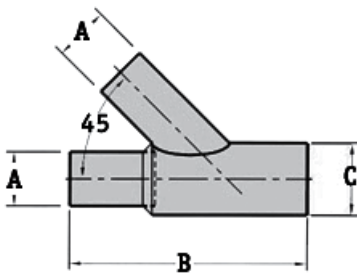
Part#	A	B	C
CEN1200267	1-1/8"	1-1/8"	4-3/4"
CEN1200200	2"	2"	5-3/4"
CEN1200195	2-1/2"	2-1/2"	6-3/8"
CEN1200171	3"	3"	7-1/2"
CEN1200189	3-1/2"	3-1/2"	9"
CEN1200157	4"	4"	9-3/8"
CEN1200175	5"	5"	12-1/4"
CEN1200162	6"	6"	14"

## 45° Exhaust Elbow



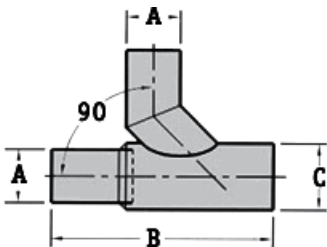
Part#	A	B	C
CEN1200192	2"	2"	6-3/4"
CEN1200215	2-1/2"	2-1/2"	7-3/4"
CEN1200109	3"	3"	8-1/2"
CEN1200111	3-1/2"	3-1/2"	10-1/4"
CEN1200112	4"	4"	10-1/4"
CEN1200113	5"	5"	13-5/8"
CEN1200114	6"	6"	15-3/8"

## "Y" Branch Connector



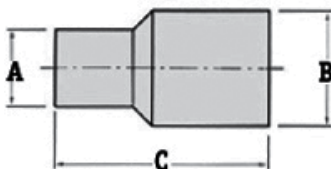
Part#	A1 + A2	B	C	D
CEN1200256	3" X 3"	4"	14"	9-5/16"
CEN1200320	3" X 3"	5"	14-7/8"	10-1/16"
CEN1200316	4" X 4"	4"	16-1/2"	11-3/16"
CEN1200304	4" X 4"	5"	17-1/2"	11-13/16"
CEN1200119	4" X 4"	6"	19-1/8"	10-5/16"

## 90° Sweep Collector



Part#	A	B	C	D
CEN1200498	3"	3"	4"	11"
CEN1200499	3"	3"	5"	12"
CEN1200763	4"	4"	4"	13"
CEN1200742	4"	4"	5"	14"

## Couplers



Part#	A	B	C
CEN1200264	2"	3"	8"
CEN1200170	3"	4"	10"
CEN1200222	3-1/2"	4"	10-1/2"
CEN1200223	4"	5"	12"

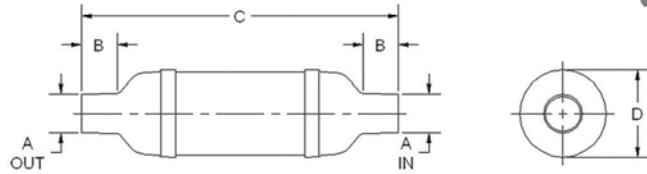
# MARINE EXHAUST COMPONENTS

FIBERGLASS SILENCERS, MUFFLERS, DAPARS, & TUBING



## VERNATONE™ Round Silencer

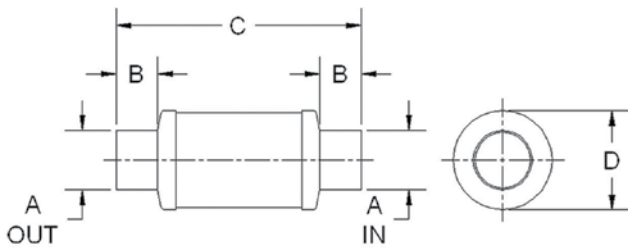
Application: All Inboards  
 Fuel Type: Gas/Diesel  
 Waterline: Above Only  
 Sound Rating: Good



Part#	A	B	C	D
CEN1000281	2"	1-1/4"	18"	4-3/4"
CEN1000103	2-1/2"	3"	21-5/8"	5-9/16"
CEN1000104	3"	3-1/2"	25-7/8"	7-1/16"
CEN1000106	4"	3-1/2"	33-11/16"	9-1/16"
CEN1000108	5"	4-3/8"	38-3/4"	11"
CEN1000111	6"	5"	41-1/2"	12-3/16"

## MINIMAX™ Muffler

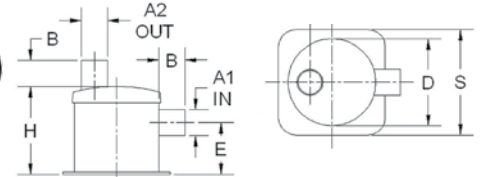
Application: V Drives & Space Restraints  
 Fuel Type: Gas/Diesel - Waterline: Above Only  
 Sound Rating: Fair



Part#	A	B	C	D
CEN1050300	3"	6-3/8"	2-1/2"	13-3/4"

## VERNATONE™ Side In - Top Out Muffler

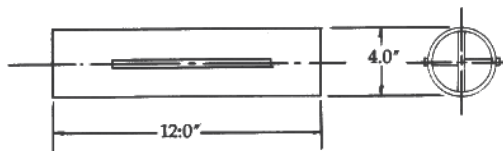
Application: Inboards, Sailboats & Generators  
 Fuel type: Gas/Diesel Waterline: Above or below  
 Sound rating: Better



Part#	A	B	D	H	S
CEN1500071	1-1/2"	2-1/2"	8-5/16"	8"	9"
CEN1500262	1-5/8"	2-1/2"	6-3/8"	5-13/16"	7"
CEN1500263	1-7/8"	2"	6-3/8"	9"	7"
CEN1500264	2"	2"	6-3/8"	9"	7"
CEN1500025	2"	2"	6-3/8"	6"	7"

## DAPAR - (each)

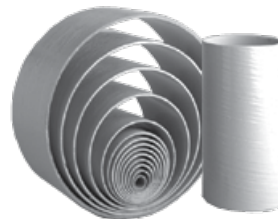
Application: Limited space & Maximum Horsepower Is Desired  
 Used to reduce noise level on Hi-Performace boats



Part#	A	B
CEN1080400	12	4"

## FIBERGLASS TUBING - (by the foot)

Gives you maximum clamping strength in a fire retardant matrix, The specially designed semi-smooth outer surface makes hose connections easy while giving you the sealing quality you need



SEE SHIPPING TERMS!

\*\*Tubing is sold per foot, the maximum "UPS-able" length is 8'

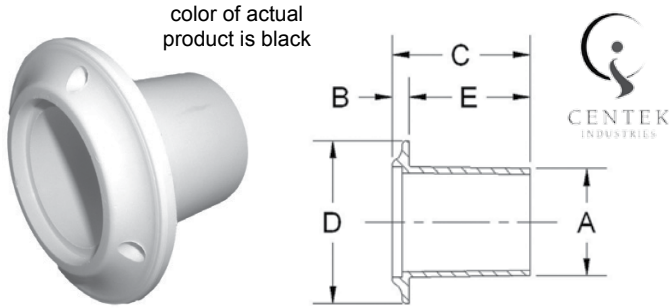
Part#	Description:
CEN1100512	2"
CEN1100501	2-1/2"
CEN1100502	3"
CEN1100503	3-1/2"
CEN1100504	4"
CEN1100505	4-1/2"
CEN1100506	5"
CEN1100507	6"



# MARINE EXHAUST COMPONENTS

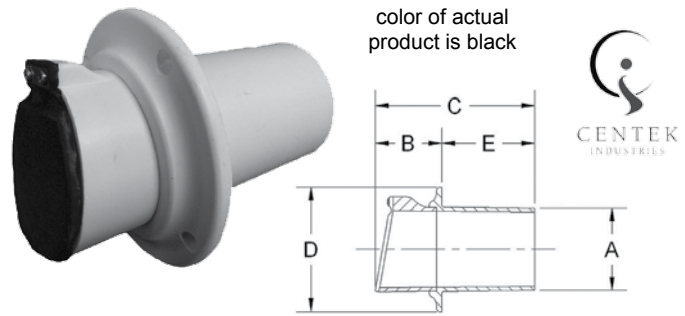
FIBERGLASS EXHAUST THRU-HULLS, RUBBER FLAPPERS & ELBOWS

## THRU HULL FITTING - Without Flapper



Part#	A	B	C	D	E
CEN1200288	3"	5/8"	3-5/8"	4-7/8"	3"
CEN1200323	4"	5/8"	5-1/8"	6"	4-1/2"

## THRU HULL FITTING - With Flapper



Part#	A	B	C	D	E
CEN1200299	3"	2-1/2"	5-1/2"	4-7/8"	3"
CEN1200325	4"	3-1/4"	7-3/4"	6"	4-1/2"



## RUBBER EXHAUST FLAPPER

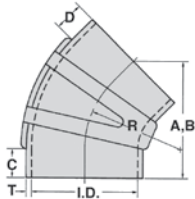
Part#	Description:
18-4456	3" exhaust protector valve, replaces Mercury #34765A1, includes stainless steel clamp
18-4457	4" exhaust protector valve, replaces Mercury #12644A1, includes stainless steel clamp
18-4458	5" & 6" exhaust protector valve, includes stainless steel clamp

100% High EPDM rubber,  
Maximum operating temperature  
250° F (121° C)

## RUBBER EXHAUST ELBOWS

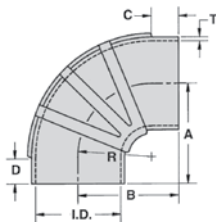


### 45 DEGREE ELBOW



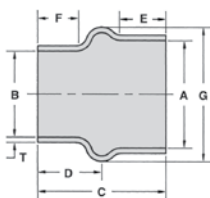
Part#	ID	A	B	C	D	R	T
16-245-3000	3.00	5.50	5.50	1.60	1.60	3.75	.25
16-245-4000	4.00	5.50	5.50	1.46	1.46	4.25	.25

### 90 DEGREE ELBOW



Part#	ID	A	B	C	D	R	T
16-290-3000	3.00	2.75	4.00	1.50	.25	2.50	.25
16-290-4000	4.00	5.75	5.75	1.25	1.25	4.50	.25

### REDUCING COUPLER

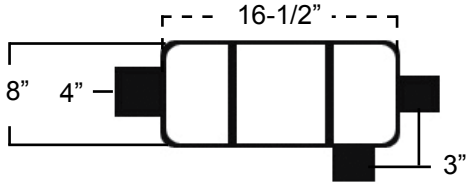


Part#	A	B	C	D	E	F	G	T
16-220-3000	3.00	3.00	5.25	2.62	1.87	1.87	4.50	.25
16-221-400X300	4.00	3.00	5.25	2.00	2.00	2.00	5.25	.25
16-220-4000	4.00	4.00	5.25	2.63	2.00	2.00	5.25	.25
16-221-500X400	5.00	4.00	6.00	3.00	2.12	1.81	6.25	.25

# MARINE EXHAUST COMPONENTS



REPLACEMENT FIBERGLASS MUFFLERS FOR SILVERTON, MAINSHIP, & LUHRS

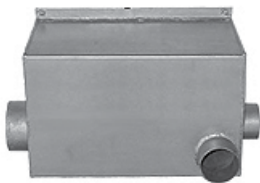


**Starboard Side**



Replaces

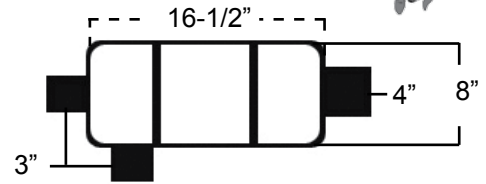
Use Mounting Kit  
MMXS-SIL-1716-MK,  
1 kit per muffler



**Part #**  
**CEN1600900**

**Description:**

Most popular replacements for Silverton 34' & Mainship 36', side discharge with two 3" inlets & one 4" starboard side outlet



**Port Side**



Replaces

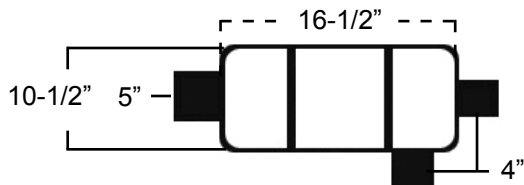
Use Mounting Kit  
MMXS-SIL-1716-MK,  
1 kit per muffler



**Part #**  
**CEN1600899**

**Description:**

Most popular replacements for Silverton 34' & Mainship 36', side discharge with two 3" inlets & one 4" port side outlet

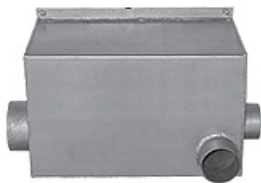


**Starboard Side**



Replaces

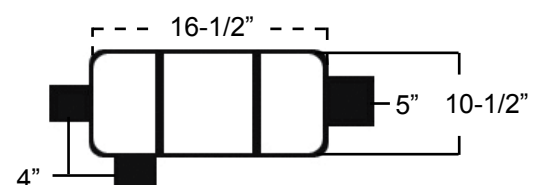
Use Mounting Kit  
MMXS-SIL-885PKG,  
1 kit per muffler



**Part #**  
**CEN1600806**

**Description:**

Replacements for Silverton, Mainship, & Luhrs, side discharge with two 4" inlets & one 5" starboard side outlet



**Port Side**



Replaces

Use Mounting Kit  
MMXS-SIL-885PKG,  
1 kit per muffler



**Part #**  
**CEN1600805**

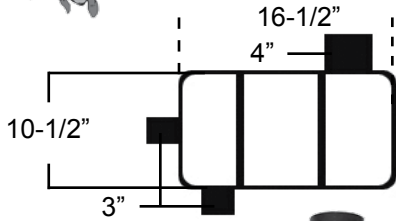
**Description:**

Replacements for Silverton, Mainship, & Luhrs, side discharge with two 4" inlets & one 5" port side outlet



# MARINE EXHAUST COMPONENTS

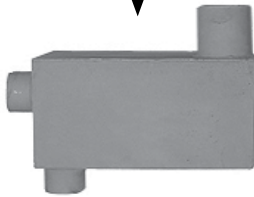
REPLACEMENT FIBERGLASS MUFFLERS FOR SILVERTON, MAINSHIP, & LUHRS



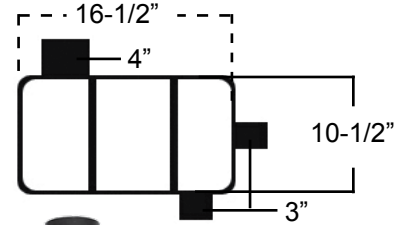
**Starboard Side**



Replaces



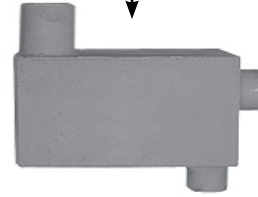
Use Mounting Kit  
MMXS-SIL-885PKG  
1 kit per muffler



**Port Side**



Replaces



Use Mounting Kit  
MMXS-SIL-885PKG  
1 kit per muffler

**Part #**

**CEN1600898**

**Description:**

Replacements for Silverton, Mainship, & Luhrs, AFT discharge with two 3" inlets & one 4" AFT starboard side outlet

**Part #**

**CEN1600897**

**Description:**

Replacements for Silverton, Mainship, & Luhrs, AFT discharge with two 3" inlets & one 4" AFT port side outlet

## STERN DRIVE EXHAUST BOOTS



**MERCUISER EXHAUST BOOTS**

Ref#	Part#	Description:
1	18-2746	Lower exhaust boot, replaces 32-14358T, 4" I.D.
2	18-2748	Upper exhaust boot, replaces 32-44348T, 4" I.D.
3	18-2759	Exhaust boot, replaces 53114A1
4	18-2761	Exhaust boot, replaces 32-90949T, 3" I.D.
5	18-2762	Exhaust tube, replaces 70981A3, 3" x 4" I.D.



**OMC / VOLVO EXHAUST BOOTS**

Ref#	Part#	Description:
1	18-2779	Exhaust boot, replaces 3852696, 4" I.D.
2	18-2780	Exhaust boot, replaces 3852741, 3-1/2" I.D.
3	18-2781	Exhaust boot, replaces 3852742, 3-1/2" I.D.