

TRANSMISSION & DRIVETRAIN PARTS

ENGINE COUPLERS



Part#
18-2171

Description:

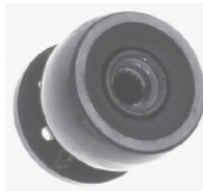
3-1/2" Bolt circle, replaces 76850A2, for all early GM engines except MR/ALPHA/BRAVO w/ triangular 3 bolt coupler



Part#
18-2172

Description:

3" bolt circle, replaces 14505A2, use when new style block w/ 3" crank bolt circle is replacing older block w/ 3-1/2" bolt circle with studs & nuts



Part#
18-2173

Description:

3" bolt circle, replaces 59826A3 for ford engines



Part#
18-2413

Description:

3" bolt circle, replaces 69354A2, for 470, 485 (224 cu.in.) s/n 4208730-6218036 (1976-1982)



Part#
18-2414

Description:

Replaces 97432A2 for 165, 170, 470, 3.7L s/n 6170297 & up (1983-1989) & 180, 190, 488 3.7LX s/n 6170297 & up 1983-1989)



Part#
18-2175

Description:

Replaces 18643A7, flex plate style for late model, small crankshaft bolt pattern style engines, w/ yoke



Part#
18-2195

Description:

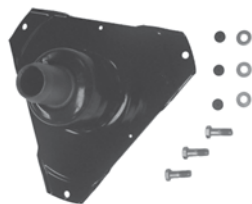
Replaces 12632A7, flex plate style for GM 4 cyl. engines w/ late style, small crankshaft bolt pattern, w/ yoke



Part#
18-2323

Description:

Replaces 18643A5, flex plate style for late model, small crankshaft bolt pattern style engines w/ out yoke



Part#
18-2321

Description:

Replaces 12632A7, flex plate style for GM 4 cyl. engines w/ late style, small crankshaft bolt pattern w/ no yoke



Part#
18-2412

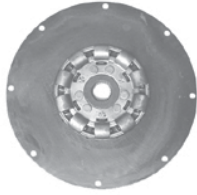
Description:

Replaces 18311A17, 861523A9, for BRAVO



TRANSMISSION & DRIVETRAIN PARTS

DRIVE PLATES & DAMPERS



Blue Jacket
MADE FOR THE SEA™

Part#
BJMDA101

Description:
Full circle 13.87" dia. for 26 spline transmissions, use on CAT 3208's & Detroit Diesel 6-71's



Blue Jacket
MADE FOR THE SEA™

Part#
BJMDA102

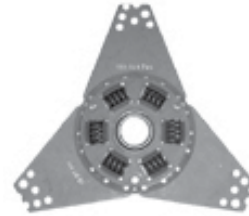
Description:
6.18" dia. damper for 26 spline transmissions as used on flywheel forward Flagship, Chris Craft, & Perkins



Blue Jacket
MADE FOR THE SEA™

Part#
BJMDA106

Description:
3 Legged damper for 26 spline transmissions for V8 5.0 & 5.7L engines up to 225hp, damper for 14" flywheels



Blue Jacket
MADE FOR THE SEA™

Part#
BJMDA106A

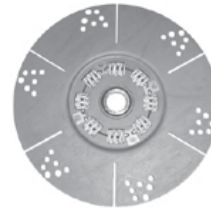
Description:
3 Legged damper for 26 spline transmissions for V8 5.0 & 5.7L engines up to 225hp, damper for 12-3/4" flywheels, also Chrysler LM 318/360



Blue Jacket
MADE FOR THE SEA™

Part#
BJMDA107

Description:
Full circle damper, use on GM 454 cu.in. 7.4L & Chrysler 440's 13.25" dia. for 26 spline transmission, for engines up to 350 HP, 14" flywheels



Blue Jacket
MADE FOR THE SEA™

Part#
BJMDA108

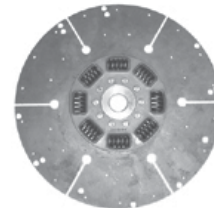
Description:
Full circle 14" flywheels, use on small blocks from 250 to 310hp, ok to use on 5.7L EFI engines



Blue Jacket
MADE FOR THE SEA™

Part#
BJMDA111

Description:
Full circle 14" flywheels, use on 454 (375 to 500 hp) high performance

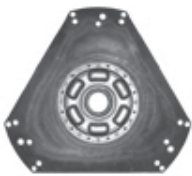


Blue Jacket
MADE FOR THE SEA™

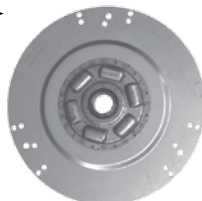
Part#
AS3-K2C

Description:
Heavy duty damper for diesel applications, up to 15" dia. for 26 spline transmission

REPLACED BY NEW
FULL CIRCLE DAMPER



"OLD"



"NEW"

Part#
R140001

Description:
Small Block Ford damper is a 3 legged original equipment damper for the larger 14" Flywheels. Fits the standard 26 spline transmission, for engines up to 240hp

Blue Jacket
MADE FOR THE SEA™

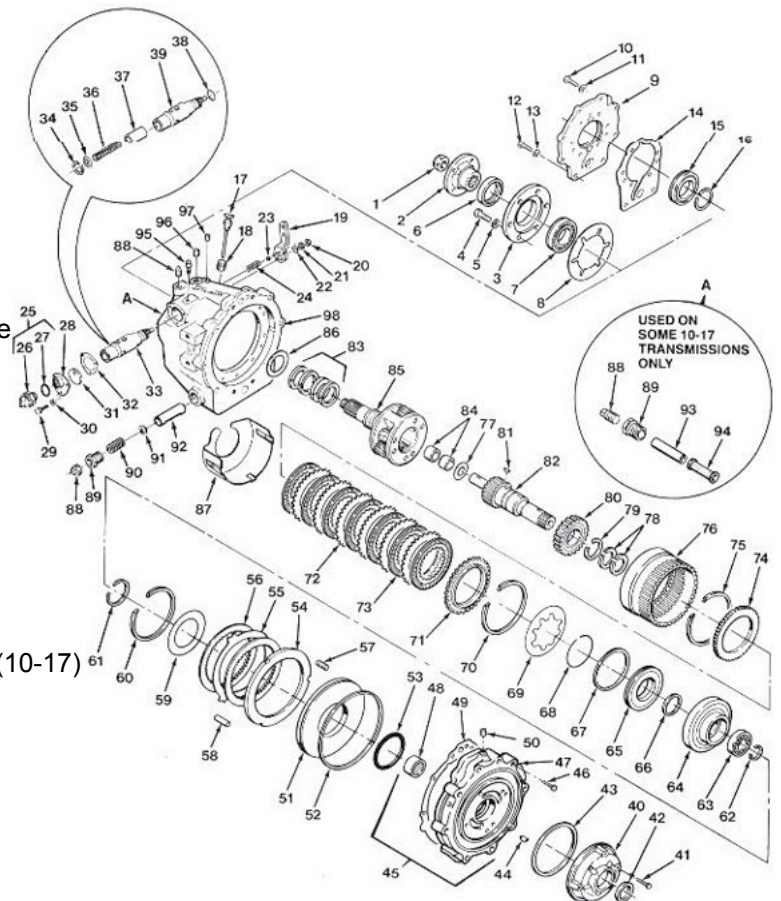
TRANSMISSION & DRIVETRAIN PARTS

BORG WARNER - VELVET DRIVE TRANSMISSION PARTS



71C & 72C Transmission Assembly - Current Production

Ref#	Part#	Description:
1	ALT23321	Nut, coupling early production 1 1/2 hex head
1	1000-149-034	Nut, coupling late production 1 11/16 hex head w/washer
2	ALT23323	Flange coupling 5" 10 spline w/small seal BW# 4547AY
2	ALT23324	Flange coupling 4" 10 spline w/small seal BW# 454-7BA
2	ALT23327	Flange coupling 5" 24 spline w/large seal SW# 1000-31 -001
2	4912	Flange coupling 5" 24 spline w/small seal
3	71-7	Bearing retainer (10-17)
6	ALT23421	Rear seal small (old style) (7/8" Nut)
6	ALT23422	Rear seal big (new style) (1-1/8" Nut)
8	ALT23025	Gasket (10-17)
8	ALT23026	Gasket (10-18)
17	10-17-559-001	Dipstick (Direct Drive), 1017/1018/71C/72C 1:1
17	10-04-559-001	Dipstick (Reduction), 1017/1018/71C/72C Reduction
17	10-06-559-001	Dipstick (V-Drive),
24	71-42	Spring
25	1004-420-052	Complete neutral switch kit
26	ALT99328	Neutral safety switch small 7/8" nut size (new style)
26	71-A102	Neutral safety switch large 1-1/8" nut size (old style)
27	10-00-141-046	O Ring
32	ALT23022	Gasket
33	71-A244A	Control Valve
34	4821	Snap Ring
38	ALT1390734	O-ring
40	ALT23350A	Pump Assy.
42	ALT23420	Front Seal
43	ALT23002	Pump Gasket
49	ALT23020	Gasket
53	ALT1393484	O Ring
55	ALT23739	Steel clutch plate reverse
56	ALT23738BR	Bronze clutch plate reverse
57	ALT23276	Spring
58	71-87A	Pin
59	ALT23188	Thrust Washer
64	71-70	Cylinder (10-17)
65	10-16-124-001	Piston
66	ALT1391984	O Ring
67	ALT23054A	Seal Ring
69	ALT23767	Spring
71	ALT23760	Clutch Plate Steel
72	ALT23701	Steel clutch plate forward (10-17)
74	ALT49700BR	Friction clutch plate
74	ALT23761	Clutch Pressure Plate
77	ALT23196	Washer
86	71-159	Washer
86	10-17-193-001	Large washer
94	71C-A98	Oil strainer assembly
95	ALT23331	Breather (push in)

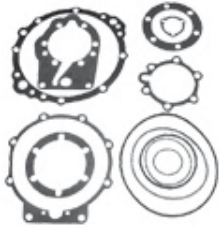




TRANSMISSION & DRIVETRAIN PARTS

VELVET DRIVE TRANSMISSION PARTS & COMPONENTS

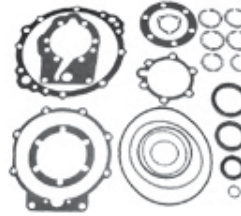
TRANSMISSION GASKET KIT



Part#
ALT23801
Description:
for 70C, 71C, 72C, 10:17 & 10:18, contains gaskets & o-rings

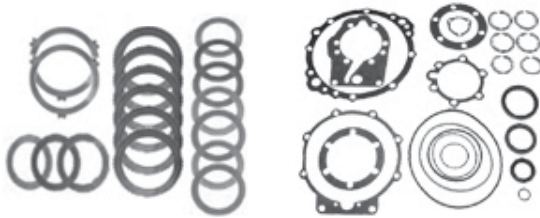


TRANSMISSION SEAL & GASKET KIT



Part#
ALT23801B
Description:
for 70C, 71C, 72C, 10:17 & 10:18, contains gaskets, o-rings, oil seals, & snap rings, sierra 18-2590

TRANSMISSION MASTER OVERHAUL KIT

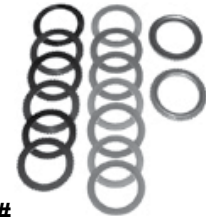


Part#
ALT23901
Description
for 70C, 71C, 72C, contains gaskets, o-rings, oil seals, snap rings, plus bronze & steel clutch plates, sierra 18-2591

TRANSMISSION CLUTCH PACKS



Part#
ALT23755
Description:
Forward, all borg warner 71 & 10:17 series



Part#
ALT23755A
Description:
Forward, all borg warner 72 & 10:18 series



Part#
10-04-559-001 (17) Dipstick for Reduction (1017 / 1018 / 71C / 72C / Reduction)
10-06-559-001 (17) Dipstick for V-drive
10-17-559-001 (17) Dipstick for Direct Drive (1017 / 1018 / 71C / 72C / 1:1)



Part#
ALT23422 (1) Rear seal, later production, replaces borg warner #1000-044-017, 3-1/4" O.D.
ALT23421 (2) Rear seal, early production prior to 1989, replaces borg warner #71C-110, 2-11/16" O.D.
ALT23420 (3) Front seal, replaces borg warner #10-00-044-017, 2" O.D.



Part#
71-42
Description
(24) Shift detent spring



Part#
1004-420-052
Description
Neutral safety kit complete, 7/8"



Part#
ALT99328
Description
(26) Neutral safety switch small new style, 7/8" nut size



Part#
71-A102
Description
(26) Neutral safety switch large old style, 1-1/8" nut size

TRANSMISSION & DRIVETRAIN PARTS

VELVET DRIVE TRANSMISSION PARTS & COMPONENTS



Part#
71-A244A

Description
(33) Control valve



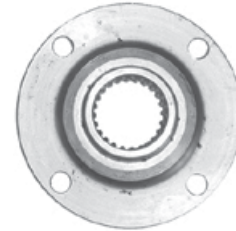
Part#
ALT23350A

Description
(40) Front Oil pump assembly



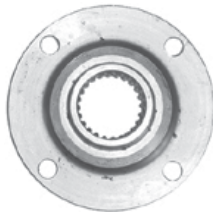
Part#
ALT23331

Description
(95) Breather (push in)



Part#
ALT23323

Description
(2) Flange coupling 5" 10 spline w/ small seal



Part#
ALT23324

Description
(2) Flange coupling 4" 10 spline w/ large seal



Part#
ALT23327

Description
(2) Flange coupling 5" 24 spline w/ large seal

VELVET DRIVE SERVICE MANUALS



Part#
WM1289

Description

Use for Borg Warner (Velvet Drive) Models 71C, 72C, 10-17 and 10-18, both Direct Drives, and Reduction. (Ratio's, 1.5:1, 1.88:1, 1.91:1, 2.1:1, 2.57:1, 2.91:1)



Part#
CRUR020037

Description
Crusader gear oil temperature sender



Part#
WM1351-SM

Description

Borg Warner (Velvet Drive) Series 5000 Marine Transmission Parts and Service Manual, includes 5000 v-drive transmission



TRANSMISSION & DRIVETRAIN PARTS

SHAFT COUPLERS & CUTLASS BEARINGS



STANDARD SHAFT COUPLERS WITH 2-1/2" PILOT



Bore size	4" Flange	5" Flange
7/8"	BUC50MC004087	
1"	BUC50MC004100	BUC50MC005100
1-1/8"	BUC50MC004112	BUC50MC005112
1-1/4"	BUC50MC004125	BUC50MC005125
1-3/8"	BUC50MC004137	BUC50MC005137
1-1/2"	BUC50MC004150	BUC50MC005150
1-3/4"		BUC50MC005175
2"		BUC50MC005200

SPLIT SHAFT COUPLERS WITH 2-1/2" PILOT

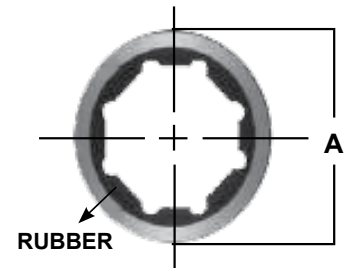
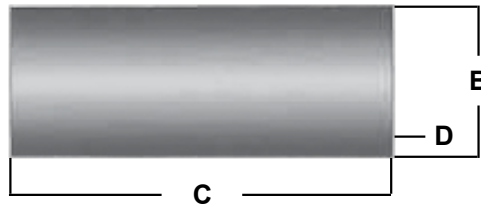


Bore size	4" Flange	5" Flange
1"	BUC50400B1000	
1-1/8"	BUC50400B1125	
1-1/4"	BUC50400B1250	BUC50500A1250
1-3/8"	BUC50400B1375	BUC50500A1375
1-1/2"	BUC50400B1500	BUC50500A1500



Part#	Description
BUCSETScrew375	3/8" x 1-1/8"
BUCSETScrew431	7/16" x 1-1/2"

MARINE CUTLASS BEARINGS



Part#	Shaft Dia. A	Outside Dia. B	Length C	Metal Wall D
MORALBACORE	3/4"	1-1/4"	3"	1/8"
MORBLENNY	7/8"	1-1/4"	3-1/2"	1/16"
MORBARRACUDA	7/8"	1-3/8"	3-1/2"	1/8"
MORBASS	7/8"	1-1/2"	3-1/2"	1/8"
MORBLACKFISH	1"	1-1/4"	4"	1/32"
MORBLOATER	1"	1-3/8"	4"	1-1/16"
MORBONITO	1"	1-1/2"	4"	1/8"
MORROADBILL	1"	1-5/8"	4"	1/8"
MORBULLHEAD	1"	2"	4"	1/8"
MORCAMA	1-1/8"	1-1/2"	4-1/2"	1/16"
MORCARP	1-1/8"	1-5/8"	4-1/2"	1/8"
MORCATFISH	1-1/8"	1-3/4"	4-1/2"	1/8"
MORCHOGSET	1-1/4"	1-1/2"	5"	1/8"

Part#	Shaft Dia. A	Outside Dia. B	Length C	Metal Wall D
MORCHUB	1-1/4"	1-3/4"	5"	1/8"
MORCOD	1-1/4"	2"	5"	1/8"
MORCROAKER	1-1/4"	2-1/8"	5"	1/8"
MORDEVILFISH	1-3/8"	1-7/8"	5-1/2"	1/8"
MORDOGFISH	1-3/8"	2"	5-1/2"	1/8"
MORDOLPHIN	1-3/8"	2-1/8"	5-1/2"	1/8"
MORREEL	1-3/8"	2-3/8"	5-1/2"	1/8"
MORFLATFISH	1-1/2"	2"	6"	1/8"
MORFLOUNDER	1-1/2"	2-3/8"	6"	1/8"
MORGROUPER	1-3/4"	2-3/8"	7"	1/8"
MORHADD0	1-3/4"	2-5/8"	7"	1/8"
MORHERRING	2"	2-5/8"	8"	1/8"
MORKINGFISH	2"	3"	8"	1/8"

TRANSMISSION & DRIVETRAIN PARTS

RING GEARS, FLYWHEELS, & REMOTE OIL FILTER COMPONENTS



MARINE RING GEARS



Part#	Description:
4397433A1	Ford 302/351 Ring Gear Only (157 teeth)
E7770M	LM 318/360 Ring Gear Only (160 teeth)
PNRFRG-153B	Chevy GM ring gear w/12-1/2" diameter flywheel (153 Teeth)
PNRFRG-168S	Chevy GM ring gear w/14" diameter flywheel (168 teeth)

MARINE FLYWHEELS

Part#	Description:
IND55-1043	Small Block GM Flywheel w/14" diameter, I/O's only 3" bolt pattern
BAR24-1408860	Small Block GM Flywheel w/ 12-1/2" diameter, 3" bolt pattern, I/O's only. This flywheel is used only on sterndrive repowers, use when replacing older engines with new Vortec engine, allows for clearance in older 12" bell housings
IND55-1044	Small block GM flywheel w/14" diameter, for Inboards, 3" bolt pattern

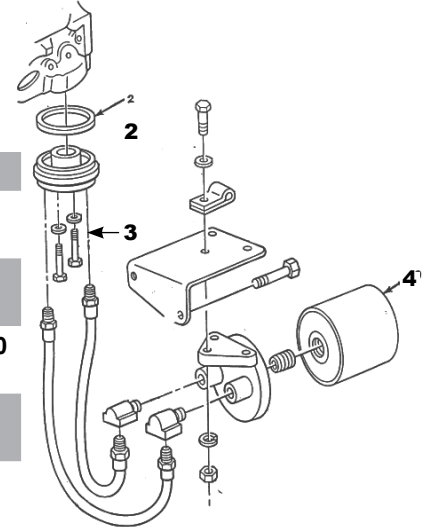
UNIVERSAL REMOTE MOUNT OIL FILTER



Ref. #	Part#	Description:
1	MP0520-000	Adaptor
2	MP0520-002	Replacement O-rings (not shown)
3	FRAHPK2	Bracket
4	HASLF115	Oil filter (not shown)

*For custom hose lengths, please call our sales counter

CRUSADER REMOTE MOUNT OIL FILTER

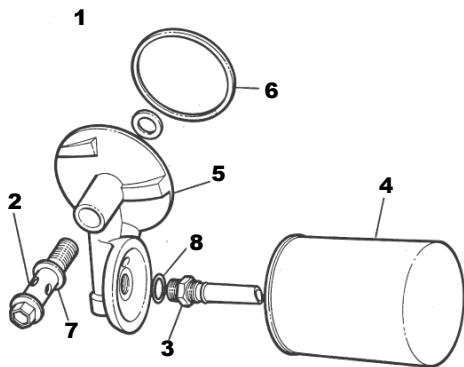


Ref. #	Part#	Description:
1	CRU22026	Complete kit
2	CRU20156	Gasket
3	CRU92205000	Gasket
4	HASLF115	Oil Filter

*We also stock all parts separate

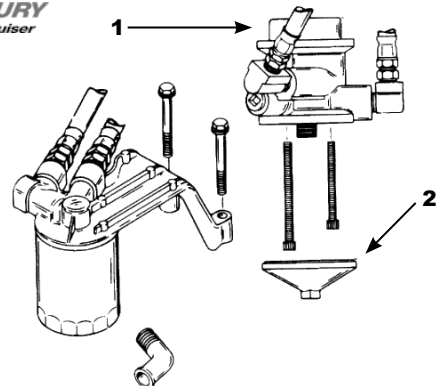


CHRYSLER LM318/360 REMOTE MOUNT OIL FILTER



Ref. #	Part#	Description:
4	HASLF115	Oil filter
*	4105210-K	Gasket kit, includes 1, 6, 7, & 8

MERCURISER REMOTE OIL FILTER ASSEMBLY



Ref. #	Part#	Description:
1	2791892	Gasket
2	2791892	Gasket

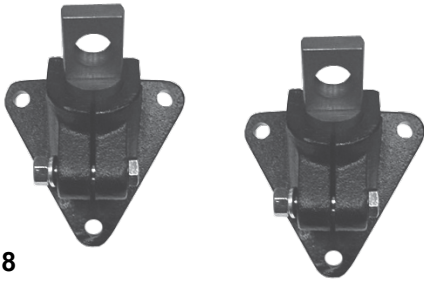
*When replacing the stainless steel riser with the cast iron 4" magnum riser, you must use 814420A5 filter bracket



TRANSMISSION & DRIVETRAIN PARTS

MARINE ENGINE & TRANSMISSION MOUNTS

FRONT ENGINE MOUNT



Part#

MC-8-66418

DESCRPTION:

Front engine support for most V6 & V8 GM Chevy blocks. Sold as a pair and includes stainless trunnion to connect to stringer mount

MC-8-66418-1 Stainless trunnion only

MERCUISER ENGINE MOUNT



Part#

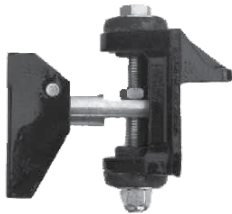
BUSDF-216

DESCRPTION:

Adjustable Vertically to facilitate engine prop shaft alignment, the rubber element will withstand temperature extremes & exposure to salt, oil & grease, Holds loads up to 275 pounds. NOTE "stud" is 3/4"-18 thread, replaces Mercruiser #66284A2

MC-8-66418-1 Tab washer

VELVET DRIVE TRANSMISSION MOUNT



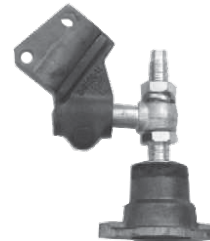
Part#

IND53-5011

DESCRPTION:

Transmission mount for Borg Warner/Velvet drive and most other inboard trannies. Direct Replacement on most Chrysler motors and all Pleasurecraft/PCM motors

CHRYSLER ENGINE MOUNT



Part#

GR3561-3N

DESCRPTION:

Chrysler front mount assembly, Comes complete with front engine support as shown, Sold individually

CRUSADER FRONT MOUNT SUPPORT BRACKET



Part#

CRU97938

DESCRPTION:

Engine support bracket for single Crusader engine mount, Accommodates CRU97926 or CRU97905 mount with 1" shaft

CRUSADER REAR MOUNT SUPPORT BRACKET



Part#

CRU97917

DESCRPTION:

Engine support bracket for Crusader engine mount, Accommodates CRU97905 or CRU97926 mount with 1" shaft

CRUSADER ENGINE MOUNT



Part#

CRU97926

DESCRPTION:

New mount has 1" dia. shaft, *When replacing older NLA 7/8" shaft mounts, engine support bracket needs to be either drilled out or replaced

CRUSADER ENGINE MOUNT



Part#

CRU97905

DESCRPTION:

New mount has 1" dia. shaft, *When replacing older NLA 7/8" shaft mounts, engine support bracket needs to be either drilled out or replaced

TRANSMISSION & DRIVETRAIN PARTS

MARINE ENGINE & TRANSMISSION MOUNTS & LEVELERS



ADJUSTABLE ENGINE MOUNT



Part#

BUSDF-100

DESCRPTION:

Adjustable both Vertically & Horizontally to facilitate engine prop shaft alignment. Holds loads 200 pounds, Base is 5" x 2-3/4". 1-7/8" from bottom of mount to lowest adjustment point. 4" from bottom of mount to top of 5/8-18 stud

ADJUSTABLE ENGINE MOUNT



Part#

BUSDF-206

DESCRPTION:

Adjustable both Vertically & Horizontally to facilitate engine prop shaft alignment. Holds loads up to 275 lbs. Most I/O applications use BUSDF-200 or BUSDF-216. Base is 5" x 2-3/4". 2-1/8" from bottom of mount to lowest adjustment point. 4-3/16" from bottom of mount to top of 5/8-18 stud

90 DEGREE ENGINE MOUNT



Part#

8-0008

DESCRPTION:

90 Degree Base bushing mount. Each mount holds loads to 350 lbs. Base is 5" L x 1-3/4" W. Vertical flange is 1-1/2" H. 2-11/16" from bottom of mount to lowest adjustment point. 4-1/2" from bottom of mount to top of 3/4-16 stud

DIESEL ADJUSTABLE ENGINE MOUNT



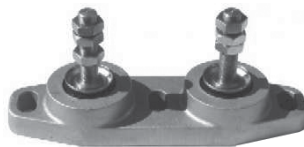
Part#

BUSDF238-M1

DESCRPTION:

Adjustable both Vertically and Horizontally to facilitate engine prop shaft alignment. Holds loads TO 550 lbs. Base is 6-1/2" x 3-3/8". 2-7/10" from bottom of mount to lowest adjustment point. 5" from bottom of mount to top of 3/4-18 stud

DIESEL ENGINE MOUNT



Part#

BUSDF-242

DESCRPTION:

Two Mountings in same casting. Increased capacity for Diesel and Heavy-duty applications. UP TO 650 LBS. capacity. Base is 12" x 3-3/8" wide. 2-1/2" from bottom of mount to lowest adjustment point. 4-1/2" from bottom of mount to top of 3/4-16 studs

DIESEL ENGINE MOUNT



Part#

8-0002

DESCRPTION:

Double Bushing mount. for Diesel & Heavy-duty applications. Adjust vertically up to 1". 550 lbcapacity per mount. Base is 8-1/4" x 2" w. 3-1/8" from bottom of mount to lowest adjustment point. 5-5/8" from bottom of mount to top of 5/8-18 stud

3.0L MERCURISER



Part#

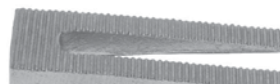
MC-8-98323

DESCRPTION:

Engine mount, for late model Mercruiser 3.0L & some late model 4.3L, replaces Mercruiser #98323A6



MOTOR LEVELING WEDGE



Part#	Overall Dia.	Bolt Size:	Dimensions:
BUC33MW2	1/16" to 1/2"	10" x 2-1/2"	8" x 5/8"
BUC33MW3	1/4" to 1-5/8"	8-3/4" x 1-3/4"	6-1/2" x 1-1/4"

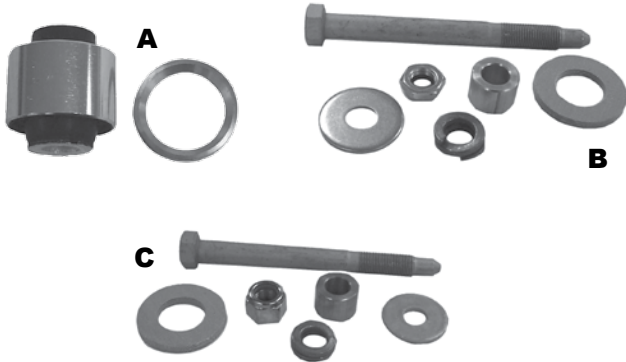


TRANSMISSION & DRIVETRAIN PARTS

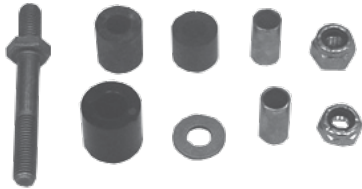
FRESH WATER COOLING KITS, THROTTLE PARTS, RAW WATER PUMPS



MERCURISER STERNDRIVE REAR ENGINE MOUNT



Ref. #	Part#	Description:
A	18-2193	Engine mount only
B	18-2140	Rear mount bolt kit up to 1982
C	18-2141	rear mount bolt kit 1983 & newer



Part#
1697477A3
Description:
Throttle & shift stud Kit



Part#
CRU96341
DESCRIPTION:
Bracket, Shift Cable
Bracket, Crusader



Part#
CRU97471
DESCRIPTION:
Bracket, Shift Cable
Bracket, Crusader



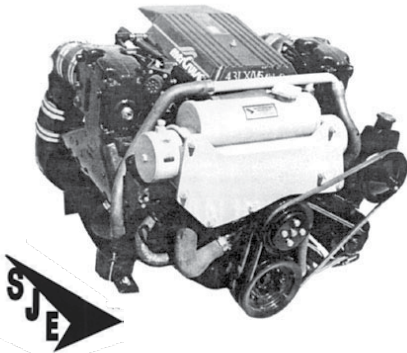
BRASS FREEZE PLUGS



Part#	Description:
PNRPE-100-B	V6 & V8 SB GM
PNRPE-102-B	BB GM
PNRPE-104-B	4 & 6 cyl. inline GM
PNRPE-108-B	Ford 302/351
PNRPE-113-B	Chrysler 318/360
PNRPE-114-B	Chrysler 440
PNRPE-125-B	Ford 460

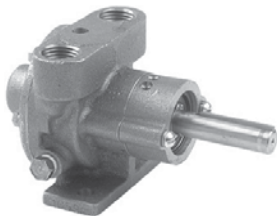
SAN JAUN FRESH WATER COOLING KITS

Fresh Water Cooling Systems by San Juan Engineering will help prevent costly corrosion caused by the harmful effects of raw water cooling. These kits will add value to your engine as well as piece of mind. Kits come complete with all hardware and components needed. Ideal for new or remanufactured engines when repowering. Choose from either engine block only or block and manifold kits



Note: Many more kits available
Call with your application

Part#	Engine:	System:
SANMC302	V6 & V8 GM Merc	Block only
SANMC314	V6 & V8 GM Merc	Block & manifold
SANMC104	V6 & V8 GM OMC, Volvo	Block only
SANMC329	7.4L V8 Merc	Block only



Part#
SHRR30G-1
Description:
1/2" NPT inlet & outlet
general purpose pump,
replaces Westerbeke
#24102

SHR10077-K Replacement impeller kit



Part#
ITT1673-1001
Description:
1/2" IPT port connections
5/8" (16mm) dia. shaft

ITT1210-0001
Impeller & gasket
(Neoprene Impeller)

