

# MARINE SEAWATER PUMPS

## GASOLINE ENGINE CIRCULATING & SEAWATER PUMPS



**Part#**  
**MESWP453ML**  
**Description:**  
For all V-6 and V-8 GM SB engines Mounting Gaskets (2) 2734897 included,



**Part#**  
**MESWP415M**  
**Description:**  
GM Big Blocks, replaces 18-3574, Mounting Gaskets (2) 2749110 included



**Part#**  
**18-3578**  
**Description:**  
2.3 liter 4 cylinder Ford Mounting Gasket #912760 included



**Part#**  
**MESWP447M**  
**Description:**  
4 & 6 cylinder in line GM Mounting Gasket 2733956 included



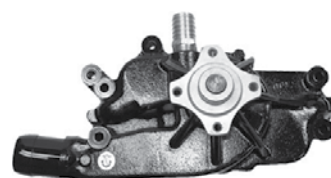
**Part#**  
**MESWP520M**  
**Description:**  
302 and 351 cu. in. Ford Mounting gasket 2756880 included, replaces 18-3584



**Part#**  
**MAL9-42603**  
**Description:**  
440 Chrysler Mounting Gasket 1737705 included, (BI-DIRECTIONAL), replaces 18-3582



**Part#**  
**MESWP307M**  
**Description:**  
LM318/360 Chrysler Mounting Gasket 2129013 included, replaces 18-3581 & MAL9-42602



**Part#**  
**MESWP425M**  
**Description:**  
Fits later model 8.1L GM engines, 496 cu.in., Mounting Gaskets (2) 27881603 included



**Part#**  
**SHRD-60**  
**Description:**  
Chrysler double pocket (dual impeller) pump for LM 318-360. Pump has 4 1" hose ports. Full bronze body construction



**Part#**  
**SHRD-55**  
**Description:**  
Chrysler double pocket (dual impeller) pump for 440. Pump has two 1" & two 1-1/4" hose ports Full bronze body construction



**SHR9959-K** Replacement impeller kit \*this pump requires 2

**SHR9959-K & SHR10615-K** Replacement impeller kits \* this pump requires 1 of each



# MARINE SEAWATER PUMPS

## GASOLINE ENGINE CIRCULATING & SEAWATER PUMPS



**Part#**  
**SHRG-21**  
**Description:**  
Pleasurecraft 302-351 CID  
Sherwood Pump #G-21,  
1" inlet, 1" outlet replaces  
PCM #RA057007

**SHR9959-K** Replacement impeller kit

**SHERWOOD**  
The Original Engine Cooling Pump Since 1921



**Part#**  
**SHRP105**  
**Description:**  
Sherwood pumps crankshaft driven  
seawater pump, This is a universal  
pump used on many different  
applications, Replaces Pleasurecraft  
#RA057026 & Crusader #40070, has  
1-1/4" hose ports

**SHR10615-K** Replacement impeller kit

**SHERWOOD**  
The Original Engine Cooling Pump Since 1921



**Part#**  
**SHRG-55-2**  
**Description:**  
Pleasurecraft 454 GM  
seawater pump, replaces  
PCM #RA057009

**SHR10615-K** Replacement impeller kit

**SHERWOOD**  
The Original Engine Cooling Pump Since 1921



**Part#**  
**46807151A12**  
**Description:**  
"NEW" design for stamped steel  
mounting bracket, 1983 - newer,  
original equipment pump for most  
MerCruiser Bravo & inboard  
engines

**MERCURY**  
MerCruiser



**Part#**  
**SHRE35**  
**Description:**  
Crusader early small &  
big block GM applications,  
replaces Crusader #97179

**SHR10615-K** Replacement impeller kit  
**SHR11068** Major repair kit, includes impeller, gasket, seal  
assy, cover bushing & bearing

**SHERWOOD**  
The Original Engine Cooling Pump Since 1921



**Part#**  
**46807151A9**  
**Description:**  
Original equipment Raw Water  
Pump, used on later MerCruiser  
Bravo & MerCruiser Inboards  
with SERPETINE Belt/Pullies,  
(wide flat belt), serpentine pulley  
included

**MERCURY**  
MerCruiser



**Part#**  
**46807151A8**  
**Description:**  
MerCruiser raw water pump  
with provision for fuel pump,  
V-belt pulley included

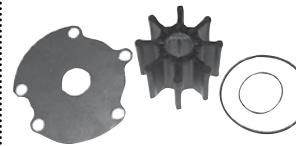
**MERCURY**  
MerCruiser



**Part#**  
**SHRP1014**  
**Description:**  
For late style Crusader GM  
engines, fits models with  
center exhaust, replaces  
Crusader #40050

**SHR10615-K** Replacement impeller  
**SHR12859** Seat and seal kit  
**SHR19300** Major Repair Kit

**SHERWOOD**  
The Original Engine Cooling Pump Since 1921



**18-3224**  
Impeller & plate kit, impeller  
water pump shaft has single flat  
spot, For MerCruiser pumps with  
1-piece plastic impeller housing

**Sierra**  
The Original Engine Cooling Pump Since 1921



**18-3150**  
Body and impeller kit for one  
piece body design, Will replace  
original 2 piece design, replaces  
MerCruiser #46-807151A14



**Part#**  
**RA057028**  
**Description:**  
Crusader raw water pump for  
8.1-Liter engines, Replaces  
Sherwood pump #P109

**SHR10615-K** Replacement impeller kit

**Crusader**  
The Original Engine Cooling Pump Since 1921



**18-3087**  
Replacement Impeller only  
for Merc Inboard/Outboard  
#47-59362 & 47-59362T

# MARINE SEAWATER PUMPS



## FRONT MOUNT SEAWATER PUMP HARDWARE & THRU HULL CONVERSION



**Part#**  
JP10-24228-1  
**Description:**  
Front mount crank driven pump used on Volvo, Pleasurecraft & Marine Power Small Block engines



JP09-1027B Replacement impeller Kit

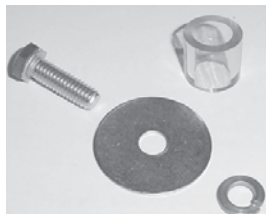


**Part#**  
BAR68-5001  
**Description:**  
Front mount crank driven pump used on Volvo & Marine Power big block engines & all small block engines with closed cooling systems, & all Indmar engines, replaces Johnson Pump #10-24232-1



JP09-812B Replacement impeller kit

### FRONT MOUNT PUMP TO BRACKET BOLT KIT



**Part#**  
93-V12K  
**Description:**  
Secures bracket to pump

### FRONT MOUNT PUMP TO CRANKSHAFT BOLT KIT



**Part#**  
93-V10K  
93-V11K  
**Description:**  
All GM -V8's  
All small block Fords

### FRONT MOUNT PUMP BRACKETS



**Part#**  
93-0573  
MP0572-000  
93-2001  
**Description:**  
Bracket for S/B GM  
Bracket for B/B GM  
Bracket for S/B Ford



**Part#**  
WHCP-5514  
**Description:**  
1-1/4" Ball Valve



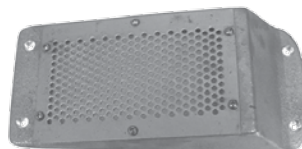
**Part#**  
BUC00HN125  
**Description:**  
1-1/4" Tail piece



**Part#**  
BUC00TH125  
**Description:**  
1-1/4" Thru Hull



**Part#**  
BUC00ISB-125  
**Description:**  
1-1/4" Inboard Strainer optional but is recommended



**Part#**  
BUC00RSS650P  
**Description:**  
South Bay Strainer, optional but is recommended





# MARINE SEAWATER PUMPS

GASOLINE & DIESEL ENGINE CIRCULATING & SEAWATER PUMPS



**Part#**  
**SHRG9903**

**Description:**  
Direct replacement seawater pump for Volvo/OMC engines, Replaces Volvo/OMC Part#'s 3852399 & 3855079. This is an original Sherwood Pump

SHR9959-K Replacement impeller kit



**Part#**  
**SHRG9901**

**Description:**  
Direct replacement seawater pump for Volvo/OMC engines, Replaces Volvo/OMC part# 3852398, 3851623, & 3858847

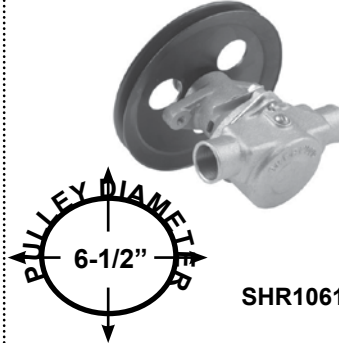
SHR9959-K Replacement impeller



**Part#**  
**SHRG-15**

**Description:**  
Replaces Chris Craft seawater pump model #G15. 1" hose ports

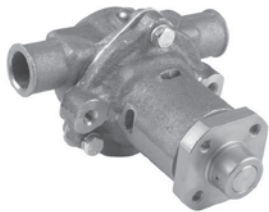
SHR9959-K Replacement impeller kit



**Part#**  
**SHRG-7B**

**Description:**  
Chrysler 318, 360 & 440 replacement pump w/ pulley for G-5 & G-7. 1-1/4" inlet, 1-1/4" outlet

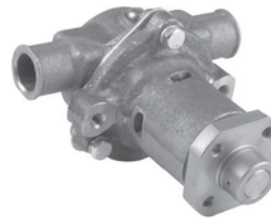
SHR10615-K Replacement impeller kit



**Part#**  
**SHRG-30-2B**

**Description:**  
Chris craft replacement seawater pump for 350 cu. in. small block engines, Pump has 1" hose fittings. This is a full bronze pump

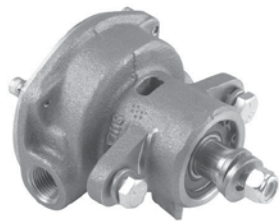
SHR9959-K Replacement Impeller kit



**Part#**  
**SHRG-45-1**

**Description:**  
Replaces Chris Craft seawater pump for 454 cu. in. big block engines. 1-1/4" inlet/outlet

SHR10615-K Impeller replacement kit



**Part#**  
**SHRG906**

**Description:**  
3/8" NPT Inlet and Outlet, Fits Kohler Generators (Ford), replaces Kohler #344371

SHR09000-K Replacement impeller kit

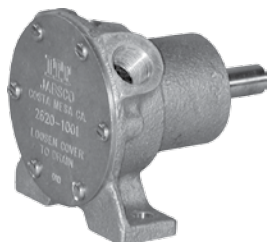


**Part#**  
**SHRG907P**

**Description:**  
Kohler 4 & 6 Cylinder Diesel Engines, Replaces Kohler #'s 267373, 246489 & 344089. 3/8"-NPT inlet & outlets

SHR9000-K Replacement impeller kit

Note: pump sold with pulley for "Vee" belt applications



**Part#**  
**ITT2620-1001**

**Description:**  
Kohler 7.5 Gas KW raw water pump, early 4 cylinder inline gasoline engines

ITT18676-0001  
Impeller & gasket



**Part#**  
**CRURA057032**

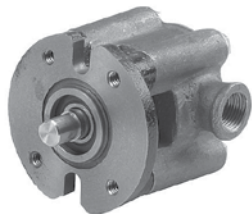
**Description:**  
For Crusader 6.0-Liter Raw Water Pump, Original Equipment

CRURP061022 Replacement impeller kit



# MARINE SEAWATER PUMPS

GASOLINE & DIESEL ENGINE CIRCULATING & SEAWATER PUMPS



**Part#**  
**SHRG8001**  
**Description:**  
3/8" NPT inlet & outlet  
Replaces G8001-01,  
GP8001, GP8001-01 &  
Kohler #359341

**SHERWOOD**  
The Original Engine Cooling Pump Since 1921

**SHR8000-K** Replacement impeller kit



**Part#**  
**SHRG8002**  
**Description:**  
Sherwood Direct Replacement  
for ONAN part # 132-0395

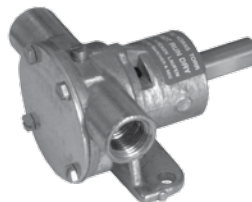
**SHERWOOD**  
The Original Engine Cooling Pump Since 1921



**Part#**  
**SHRG702**  
**Description:**  
Replacement for ONAN  
Pump part # 132-0358. Fits  
ONAN Models MDKAL, A &  
B Models

**SHERWOOD**  
The Original Engine Cooling Pump Since 1921

**SHR10077-K** Replacement impeller kit

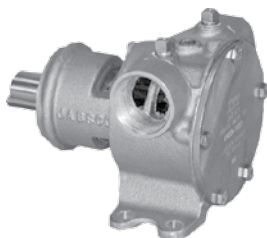


**Part#**  
**JP10-35038-7**  
**Description:**  
Bronze pump, size F35B-8007  
replacement pump for Onan  
Ensign & MAJB engines. Also  
for Faryman A30M, A40M, K34,  
& L30M engines

**JOHNSON PUMP**

**JP09-808B** Replacement impeller kit

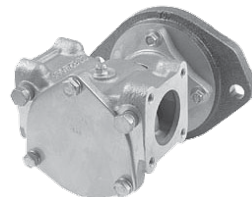
**Note: 12mm shaft diameter**



**Part#**  
**ITT6400-1051**  
**Description:**  
1-1/4" IPT port connections 1"  
(25.4mm) dia. shaft, replaces  
Caterpillar #1W9046

**JABSCO**

**ITT17935-0001** Impeller  
**ITT816-0000** Cover Gasket



**Part#**  
**SHRP1710A**  
**Description:**  
Raw Water Pump Caterpillar  
3116, Caterpillar # 4P7168,  
Replaces Older Sherwood #'s  
P1710, P1710-01, P1710-02,  
P1710X, P172

**SHERWOOD**  
The Original Engine Cooling Pump Since 1921

**SHR17000-K** Replacement impeller kit  
**SHR24576** Minor Repair kit  
**SHR24577** Major repair kit

**Note: Pump includes front flange but not gear**



**Part#**  
**ITT7420-1001**  
**Description:**  
Raw water pump for a  
catapillar 3208, Vertical  
ports, Replaces Caterpillar  
#7W8019

**JABSCO**

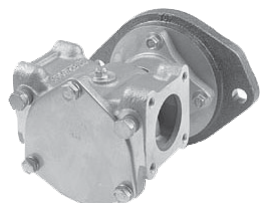
**ITT17935-0001** Replacement impeller kit



**Part#**  
**SHRP176X**  
**Description:**  
Raw water pump for a  
Caterpillar 3208, (435 hp),  
Replaces Caterpillar #9Y1304  
& 7E4115, 1-1/2" NPT inlet &  
1-3/4" hose outlet

**SHERWOOD**  
The Original Engine Cooling Pump Since 1921

**SHR17000-K** Replacement impeller kit



**Part#**  
**SHRP1732A**  
**Description:**  
For Caterpillar 3126. Replaces  
CAT # 113-1109 & 152-8392,  
Repalces Sherwood # P1726X

**SHERWOOD**  
The Original Engine Cooling Pump Since 1921

**SHR17000-K** Replacement impeller kit



**Part#**  
**SHRG1006**  
**Description:**  
1" NPT Inlet and Outlet,  
replaces G1004, G1005,  
G1006-01, replaces  
ONAN #132-0356

**SHERWOOD**  
The Original Engine Cooling Pump Since 1921

**SHR10615-K** Replacement impeller kit



# MARINE SEAWATER PUMPS

GASOLINE & DIESEL ENGINE CIRCULATING & SEAWATER PUMPS



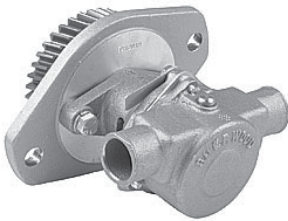
**Part#**  
**JP10-32621-2**  
**Description:**  
 Volvo AQ125, 131, 145  
 replacement pump for 4  
 cylinder engines

- JP09-801B** Impeller & gasket kit
- JP01-45930** Gasket
- JP05-29-105** Seal
- JP01-45021** End Cover
- JP09-45913** Service Kit - imp., gasket, seals, key & cover



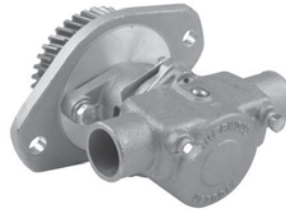
**Part#**  
**SHRP1722A**  
**Description:**  
 Cummins diesel seawater  
 pump, Replaces cummins  
 #'s 3912139, 3922589,  
 3964989, & P1722X, has  
 2" inlet & 1-3/4" outlet

**SHR17000-K** Replacement impeller kit



**Part#**  
**SHRM71**  
**Description:**  
 1-1/4" NPT Inlet and Outlet,  
 replaces M70, M71, M71-01,  
 replaces Cummins #3907458  
 & 3912019

**SHR10615-K** Replacement impeller kit



**Part#**  
**SHRGC5**  
**Description:**  
 Cummins diesel seawater  
 pump, Replaces Cummins  
 #3920298, 3927684, & GC4,  
 has 1-1/2" inlet & outlet

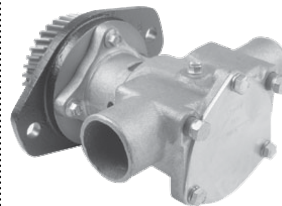
**SHR15000-K** Replacement impeller kit



**Part#**  
**SHRGC1**  
**Description:**  
 Replaces Cummins  
 #3912962, For "Early" 6B  
 Series 250-HP Engines,  
 Inlet 1-1/2", Outlet 1-1/2".

**SHR15000-K** Replacement impeller kit  
**SHR23980** Minor Repair kit  
**SHR23981** Major repair kit

**Note: If needed order mounting gasket Cummins # 3008400**



**Part#**  
**SHRP1716A**  
**Description:**  
 Replaces Cummins 6B Series  
 300-HP, Pump Body is Bronze,  
 Inlet 2", Outlet 1-3/4", Cam: Full,  
 Impeller: Neoprene, Shaft Seal:  
 Mechanical, Drive: Flange  
 Mounted to Engine. Replaces #'s  
 P1712 & P1716X, Replaces  
 Cummins #'s 3919899 & 3922590

**SHR17000-K** Replacement impeller kit

**Note: If needed order mounting gasket Cummins # 3008400**



**Part#**  
**SHRP1727A**  
**Description:**  
 Replaces Cummins  
 #3897194, for 6C Series,  
 450-HP, Flanged Ports,  
 sold without port elbow water  
 fittings. Replaces #P1727X

**SHR17000-K** Replacement impeller kit

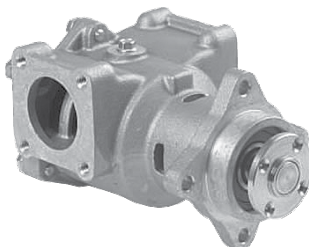
**Note: If needed order mounting gasket Cummins # 3008400**



**Part#**  
**SHRP1730A**  
**Description:**  
 Replaces Cummins 6C-Series  
 Engine Cooling Pump, replaces  
 Cummins #3866493, 3964765  
 & 4003526. Replaces P1730X,  
 Flanged Ports, sold without port  
 elbow water fittings

**SHR17000-K** Replacement impeller kit

**Note: If needed order mounting gasket Cummins # 3008400**



**Part#**  
**SHRP2701X**  
**Description:**  
 For Cummins "QSC" Models,  
 Replaces older pump #'s  
 P2701-01 & P2701-02.

**SHR27000-K** Replacement impeller kit



**Part#**  
**ITT777-9003**  
**Description:**  
 Replaces JP10-24070-5. 1"  
 IPT port connections 5/8"  
 (16mm) dia. shaft

**JP09-1028B** Impeller  
**ITT890-0000** Cover Gasket

