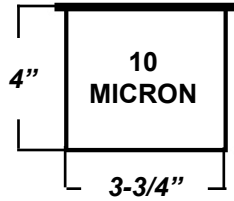




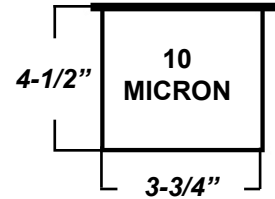
# MARINE FUEL FILTRATION

## 10 MICRON SPIN ON FUEL FILTERS & WATER SEPERATORS



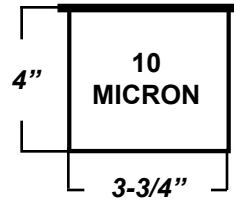
**Part#**  
**18-7944**

**Description:**  
Fuel water separator, Mercury  
35-807172, 35-802893Q, Yamaha  
ABB-FUELF-IL-TR (short filter)



**Part#**  
**18-7945**

**Description:**  
Fuel water separator, Mercury  
35-807172, 35-802893Q, Yamaha  
ABB-FUELF-IL-TR (long filter)



**Part#**  
**18-7946**

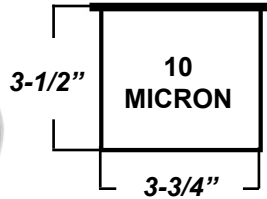
**Description:**  
Fuel water separator, OMC 502905



**Mercury  
Outboard**

**Part#**  
**MAL9-37805**  
**MAL9-37806**

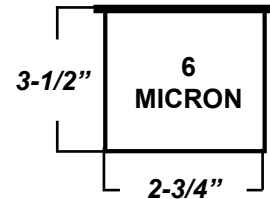
**Description:**  
V6 EFI 35-18458Q3 (blue sensor)  
V6 EFI 35-18458Q4 (black sensor)



**Part#**  
**18-7989**

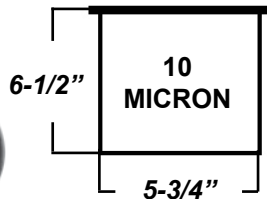
**Description:**  
Fuel water separator, OMC 502906,  
Volvo 3851218-2, 3852413 (1991  
- Up) 3.0L models, (1992) 5.0L &  
5.8L Fords and electric fuel pump  
equipped 4.3L, 7.4L, 8.2L models  
from 1992-93

**VOLVO  
PENTA**



**Part#**  
**3862228**

**Description:**  
OMC & Volvo small spin on fuel  
filter 502906 (oem)

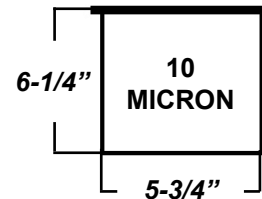


**Part#**  
**18-7866**

**Description:**  
10 Micron, fits all Yamaha 2 & 4  
stroke, EFI & HPDI outboard motors,  
meets Yamaha Marine requirements



**YAMAHA**



**Part#**  
**YAMMAR-FUELIL-TR**

**Description:**  
10 Micron, fits all Yamaha 2 &  
4 stroke, EFI & HPDI outboard  
motors

# MARINE FUEL FILTRATION

## FUEL WATER SEPARATOR KITS



21 Micron kit with powder coated aluminum bracket, 90 GPH flow rate

**Part#**  
18-7852-1

**Description:**  
Aluminum bracket, includes filter 18-7845, 1/4" pipe in / outlets



21 Micron kit with stainless steel bracket, 90 GPH flow rate

**Part#**  
18-7777-1

**Description:**  
Stainless steel bracket, includes filter 18-7845, 1/4" pipe in / outlets



10 Micron kit with powder coated aluminum bracket, high flow rate

**Part#**  
MAL9-37850

**Description:**  
Aluminum bracket, includes filter 9-37801, 1/4" pipe in / outlets



10 Micron kit with stainless steel bracket, 90 high flow rate

**Part#**  
MAL9-37855

**Description:**  
Stainless steel bracket, includes filter 9-37801, 1/4" pipe in / outlets



DRAIN-A-BOWL, 10 micron kit, powder coated metal reusable bowl 2 & 4 cyl. engines w/ aluminum bracket & bowl

**Part#**  
MAL9-37881

**Description:**  
replaces racor 320R-RQC-02, \*will not separate 2 cycle oil from fuel 1/4" I/O



DRAIN-A-BOWL, 10 micron kit, powder coated metal reusable bowl 2 & 4 cyl. engines w/ bowl only

**Part#**  
MAL9-37883

**Description:**  
replaces racor B32020MAM, \*will not separate 2 cycle oil from fuel, 1/4" I/O



**OUTBOARD'S ONLY**  
VISA-A-BOWL, 10 micron kit, reusable bowl 2 & 4 cyl. engines w/ aluminum bracket & clear bowl

**Part#**  
MAL9-37880

**Description:**  
replaces racor 320R-RAC-01, \*will not separate 2 cycle oil from fuel, 1/4" I/O



**OUTBOARD'S ONLY**  
VISA-A-BOWL, 10 micron kit, reusable bowl 2 & 4 cyl. engines w/ clear bowl only

**Part#**  
MAL9-37882

**Description:**  
replaces racor B32013, \*will not separate 2 cycle oil from fuel, 1/4" I/O



# MARINE FUEL FILTRATION

## CARBURETOR FUEL FILTERS



**Part#**  
18-7860

**Description:**  
Fuel pump filter w/ gasket, replaces 381690, 312456 w/ AC fuel pumps, & MerCruiser 35-49088A2 filter located on top side of fuel pump



**Part#**  
35803897Q1

**Description:**  
Fuel pump filter, for 2.5/3.0 liter SN# 6229718 & later, All MC 224 CID SN# 6218037 & later, All GM 262 CID SN# A331455 & later, w/ carter fuel pumps, filter located on underside of fuel pump, replaces sierra 18-7784



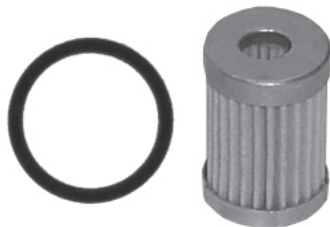
**Part#**  
18-7861

**Description:**  
Fuel canister & filter assembly, replaces 961911, OMC, & Crusader



**Part#**  
18-7862

**Description:**  
Fuel filter & gasket for 18-7861, replaces 841162-1, Fram CG20 & Hastings GF6A



**Part#**  
18-7855

**Description:**  
Carburetor fuel filter (paper), replaces 983870, 910139, & Rochester 17068453



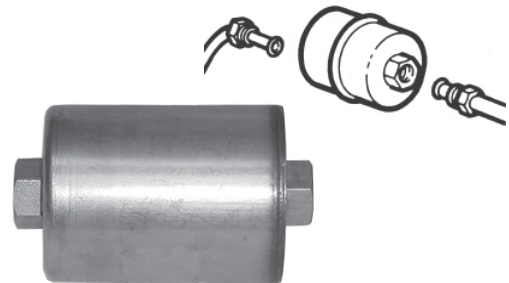
**Part#**  
18-7854

**Description:**  
Carburetor fuel filter (stone), replaces 984491, 311684, 3854019, & Rochester 17078904



**Part#**  
18-7869

**Description:**  
Carburetor fuel filter (nylon screen), replaces most Rochester 4 BBL carburetors



**Part#**  
4142597

**Description:**  
Replaces Chrysler In-line fuel filter, 5/16 inverted flare threaded ends

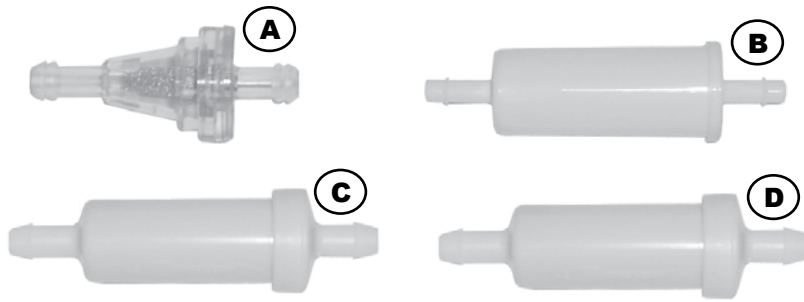
# MARINE FUEL FILTRATION

## IN-LINE & FUEL FILTER ELEMENTS



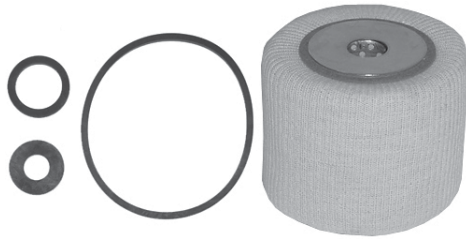
Sierra  
MARINE

### IN-LINE FUEL FILTERS



Ref#	Part#	Description:
A	18-7828	1/4" In-line small
B	18-7829	1/4" In-line large
C	18-7830	5/16" In-line
D	18-7831	3/8" In-line

**HASTINGS**  
PREMIUM FILTERS®

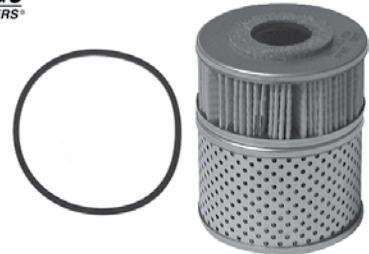


**Part#**  
**HASFF930**  
**FRAC1110PL**

**Description:**  
for FRAFBM1110PLM canister  
for FRAFBM1110PLM canister



**HASTINGS**  
PREMIUM FILTERS®



**Part#**  
**HASFF960**

**Description:**  
Element only, for FRAFCS1136M  
canister

**HASTINGS**  
PREMIUM FILTERS®



**Part#**  
**HASFF958**  
**FRACS1133PL**

**Description:**  
For FRAFCS1133PLM canister  
For FRAFCS1133PLM canister



**Part#**  
**FRACC1133PL**

**Description:**  
Element only, for FRAFCS1133PLM  
canister

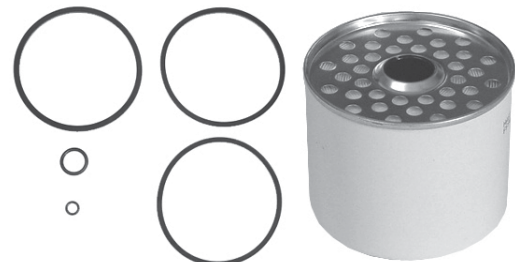
**HASTINGS**  
PREMIUM FILTERS®



**Part#**  
**HASGF6A**

**Description:**  
Replaces FRAM FRACG20

**HASTINGS**  
PREMIUM FILTERS®



**Part#**  
**HASFF963**

**Description:**  
Replaces FRAM FRAC1191A



# MARINE FUEL FILTRATION

## RACOR FUEL FILTERS & WATER SEPARATORS



w/ plastic bowl

Part#	Description:	Application
RACB32013	Replaces MERC #35604941	O/B's
RACB32014	Replaces OMC #174144 & #502905	O/B's



w/ metal bowl

Part#	Description:	Application
RACB32020MAM	(A) Replaces MERC #35604941	O/B & I/O's
RACB32021MAM	(A) Replaces OMC #174144 & #502905	O/B & I/O's



Part#	Description:	Application
RACS3213	Replacement Element for RACB32013	O/B's
RACS3214	Replacement Element for RACB320134	O/B's



Part#	Description:	Application
RACS3220UL	Replacement Element for RACB32020MAM	O/B & I/O's
RACS3221UL	Replacement Element for RACB32021MAM	O/B & I/O's



**Part#**  
RACIN101-2

**Description:**  
Replacement element, replaces DAHL 101



**Part#**  
RACIN201-2

**Description:**  
Replacement element, replaces DAHL 201



**Part#**  
RACR11T

**Description:**  
Replacement gas element for RAC110A, replaces crusader #47047



**Part#**  
RACR12S

**Description:**  
Replacement diesel element for RAC120R

# MARINE FUEL FILTRATION

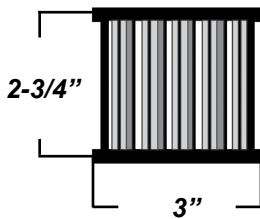


## RACOR DIESEL FUEL FILTERS & WATER SEPARATORS



TURBINE SERIES

Part#	Description:	Flow Rate:
RAC500MA	Complete unit w/ see thru bowl	60 GPM

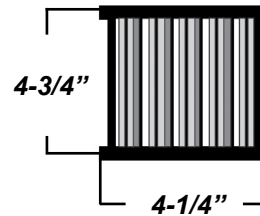


Part#	Description:	Micron:
RAC2010SM	Replacement Element for RAC500MA	2 / Brown
RAC2010PM	Replacement Element for RAC500MA	30 / Red
RAC2010TM	Replacement Element for RAC500MA	10 / Blue



TURBINE SERIES

Part#	Description:	Flow Rate:
RAC900MA	Complete unit w/ see thru bowl	90 GPM

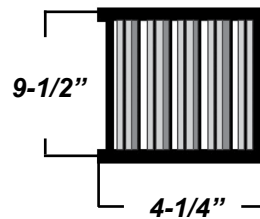


Part#	Description:	Micron:
RAC2040SM	Replacement Element for RAC900MA	2 / Brown
RAC2040PM	Replacement Element for RAC900MA	30 / Red
RAC2040TM	Replacement Element for RAC900MA	10 / Blue



TURBINE SERIES

Part#	Description:	Flow Rate:
RAC1000MA	Complete unit w/ see thru bowl	180 GPM



Part#	Description:	Micron:
RAC2020SM	Replacement Element for RAC1000MA	2 / Brown
RAC2020PM	Replacement Element for RAC1000MA	30 / Red
RAC2020TM	Replacement Element for RAC1000MA	10 / Blue