



# MARINE DOMESTIC WATER PUMPS

DOMESTIC WATER PUMPS & SHOWER SUMP SYSTEMS

## AQUA KING FRESH WATER PUMPS AUTOMATIC DEMAND

**SHURflo**  
Pentair Water



12V D.C., Reliability and serviceability, Freshwater pumps feature three independent pumping chambers, Self-prime, lifting water 8 feet, Runs dry without damage, Integrated low RPM permanent magnet motor matched to the pump gives maximum whisper quiet performance, Ignition protected check valve rated up to three fixtures, sinks or shower, Includes 2 straight 1/2" barbed fittings

Part#	Description:
SUR3901-0216	3.0 GPM
SUR4901-4212	4.0 GPM

## EXTREME SERIES FRESH WATER PUMP

**SHURflo**  
Pentair Water



EXTREME™ SERIES

The SHURflo Extreme Series Domestic Water pump, the Smart Sensor is a micro-controller based variable speed pump silently delivering over 5 gallons per minute & pressure up to 65 PSI, SHURflo's Smart Sensor precisely monitors your system's water pressure & adjusts the motor's speed, thus eliminating the need for a pressure switch, 3 year warrantee

Part#	Description:
SUR4901-0211	4.0 GPM - 50 PSI
SUR5901-0211	5.7 GPM - 60 PSI

## AQUA KING FRESH WATER PUMPS AUTOMATIC DEMAND

**SHURflo**  
Pentair Water

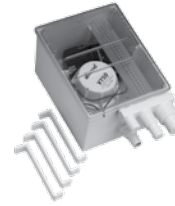


Shurflo Pump accumulator is the most advanced domestic water system available, This fully automatic system has a 3.8 GPM automatic pump attached to a stainless steel accumulator tank, This combination produces tasteless, odorless water, Smooth & consistency, The system is self priming, corrosion resistant & can run dry without damage

Part#	Description:
SUR804-009-00	3.8 GPH automatic pump w/ accumulator tank

## SHOWER & DRAIN SUMP PUMP SYSTEM

**attwood**  
marine integrity

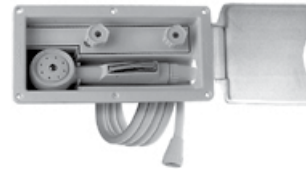


Pump out the shower, sink or tub Drain with a V750 bilge pump actuated by a float switch, the pump automatically starts at 2" water level & removes accumulated water, It provides three inlet sizes for hooking up multiple drains & an outlet for 3/4" I.D. hose, A check valve in the outlet connector prevents pump cycling & reduces a standing water odor, Clear plastic lid for filter inspection & service, Updated design now has four mounting clamps included for easy installation & service

Part#	Description:
ATT4141-4	500GPM
ATT4143-3	750GPM

## SHOWER SYSTEM

**attwood**  
marine integrity



This shower system installs flush in the transom or under the gunwale, Includes hinged cover & replaceable sprayer head. Fixtures are corrosion resistant, Housing & cover are made of high-impact, UV resistant, engineering grade plastic & are pre-drilled for six #8 screws

Part#	Description:
ATT4131-4	Comes with 6' hose, shut-off, and hot/cold mixing controls, Connects to freshwater system for showering

## MULTIPLE PORT SHOWER SUMP

**JOHNSON PUMP**



A compact shower pump system Intake hoses: 1 x 3/4", 1 x 3/4" or 1 x 1", 1 x 1 1/8" or 1 x 1 1/2", Discharge hose 3/4", Tight fitting lid to minimize splashing & odors, Check valve on outlet

Part#	Description:
JP4715B	Multi-Port Sump Pump

# MARINE DOMESTIC WATER PUMPS

AIR CONDITIONING & WASHDOWN PUMPS



## MARCH AIR CONDITIONING PUMPS



Inlet 3/8" FPT; Outlet 1/4" MPT,  
Replaces Cruisaire PM250, Marine  
Air P400, Lunair WPC250, Aqua-Air  
AQPM-02. Not self priming, 250  
GPH up to 6,000 BTU; 115 VAC.  
Sealed motor

**Part#**  
DEPLC-2CP-MD  
DEPLC-2CPWETEND

**Description:**  
250 GPH  
Replacement Pump End



Inlet 3/4" FPT; Outlet 1/2" MPT, 3/4"  
O.D.Replaces Cruisaire PM500, Marine  
Air P500, Lunair WPC500, Aqua-Air  
AQPM-05 Not self priming, Sealed motor  
500 GPH up to 24,000 BTU; 115 VAC

**Part#**  
DEPLC-3CP-MD  
DEPLC-3CPWET END

**Description:**  
500 GPH  
Replacement Pump End



Inlet 1" FPT Outlet 1/2" MPT, 13/16" O.D  
1000 GPH up to 48,000 BTU, 115 volt,  
Replaces Cruisaire PM1000, Marine  
Air P300, Lunair WPC1000 & Aqua-Air  
AQPM-10

**Part#**  
DEPAC-5C-MD  
DEPAC-5CWETEND

**Description:**  
1000 GPH  
Replacement Pump End

## "The Blaster" Washdown Pumps



"The Blaster" Washdown Pump, Finally a reliable  
washdown pump built for fresh water or salt water  
use, The diaphragm design provides 3.5 GPM power to  
"blast" away debris & can be run dry without damage,  
This self-priming unit turns on & off automatically when  
the hose nozzle is opened & closed due to the built in  
45 PSI pressure switch, The "Pro Blaster" 4.0  
Washdown Pump has a sealed motor with Marine Tough  
Water Proof Coating, 2 year warranty

**Part#**  
SUR3901-2214  
SUR4901-4282

**Description:**  
"The Blaster" Washdown Pump  
"The Pro Blaster" Washdown Pump

## WASHDOWN KITS



Kit includes the Pro  
Blaster Pump, fittings,  
Blaster nozzle, Raw Water  
Strainer and ten or  
twenty-five foot coiled  
hose., 4.0 GPM

**Part#**  
SUR4903-4282

**Description:**  
ProBlaster 25' hose

## Pro Baitmaster™ Heavy Duty Livewell Pump



The pro baitmaster is excellent for livewell or washdown  
applications, The seamless shell motor & sealed switch  
protects the pump from splashed liquids, Includes noise  
reducing baseplate, 12VDC Continuous duty, 45psi for  
tank sizes 35 and under

**Part#**  
SUR4901-6212

**Description:**  
Heavy duty livewell pump

## Extreme Pro Blaster Water Pump



Delivers over 5 GPM up to 50 PSI for powerful washdown  
capabilities. Features a seamless heat electro-coated motor  
shell that eliminates motor corrosion while maximizing flow  
efficiency & super strong potted material eliminates  
moisture from ever reaching the microprocessor

**Part#**  
SUR5901-6212

**Description:**  
5.0 GPM - 50 PSI



## Fittings For Tubing & Hose

Accommodate all Shurflo demand  
pumps with 1/2" MPT, "Wing" style hand  
tighten and hex head style



Part#	Size:	Description:
SUR8-035	1/2" MPT	Elbow, hex
SUR8-154-01	5/8" Barb	Straight, wing nut
SUR8-155-01	5/8" Barb	Elbow, wing nut
SUR8-156-01	3/4" Barb	Straight, wing nut
SUR8-157-01	3/4" Barb	Elbow, wing nut
SUR8-158-01	1/2" Barb	Straight, wing nut
SUR8-161-01	1/2" Barb	Elbow, wing nut



# MARINE DOMESTIC WATER PUMPS

## BILGE PUMPS & FLOAT SWITCHES



Automatic bilge pumps with built in float switches

<b>Part#</b>	<b>Description:</b>
ATT4505-7	S500 outputs 500 GPH at 3.3' head, 3/4" hose outlet, 12 volt
ATT4507-7	S750 outputs 750 GPH at open flow, 625 GPH at 3.3' head. 3/4" hose outlet. 12 volt
ATT4511-7	S1100 outputs 1100 GPH at open flow, 973 GPH at 3.3' head. 1 1/8" hose outlet, 12V

### JOHNSON ULTIMA AUTOMATIC BILGE PUMP

Integration of the patented Ultima "field effect" sensing technology into the 12v bilge pump body creates a sleek, reliable compact, unit ready to install & run for years & years of unerring service



<b>Part#</b>	<b>Hose Size</b>	<b>GPH:</b>
JP32-47259-2	3/4"	800
JP32-47260-003	3/4"	1000 *not shown
JP32-47261-002	1-1/8" & 1-1/4"	1250



### HEAVY DUTY BILGE PUMP



All Heavy-Duty Bilge Pumps include a 36" length of 16-gauge caulked and tinned copper wire, Attwood's highest capacity bilge pump! Ball-bearing design provides for cooler motor operation and longer life

<b>PART#</b>	<b>DESCRIPTION:</b>
ATT4030-4	1700 GPH at open flow, 1 1/8" hose
ATT4060-4	2000 GPH at open flow, 1 1/8" hose

### JOHNSON HEAVY DUTY STYLE PUMPS

(will fit Rule 1500, 2000 pump base)



The best choices when you are looking for high performance, heavy duty 12v pumps designed to meet the tough demands of commercial and recreational duty, Both pumps may be automatically controlled with a float switch

<b>Part#</b>	<b>Hose Size</b>	<b>GPH:</b>
JP16004	1-1/8" - 1-1/4"	1600
JP22004	1-1/8" - 1-1/4"	2200



### RULE-MATE "ECO FREINDLY" BILGE PUMP



Electric 12V, state of the art water sensing technology, no float switch required, straight & 90° hose barb included, anti fouling impeller, pump turns on when water level rises & shuts off when removed



<b>Part#</b>	<b>Description:</b>
RULRM500A	500 GPH, 3/4" hose
RULRM750A	750 GPH, 3/4" hose
RULRM1100A	1100 GPH, 1-1/8" hose



### JOHNSON ULTIMA FLOAT SWITCH



No moving parts, Totally sealed solid state electronics & field detectors, No mercury, No exposed sensors eliminate corrosion possibilities

<b>Part#</b>	<b>Description:</b>
JP36303	Ultima Automatic Float Switch



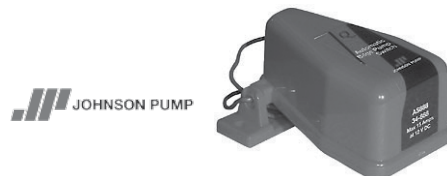
### FLOAT SWITCHES



Automatic float switch converts any bilge pump that draws 12 amps at 12 VDC or 6 amps at 24 VDC or less to fully automatic operation, Mounts from any surface from horizontal to a 24 degree angle, Activated in 2" of water

<b>Part#</b>	<b>Description:</b>
ATT4202-7	W/O cover
ATT4201-7	With cover

### JOHNSON AUTOMATIC AS888 FLOAT SWITCH



For fully automatic bilge pumping operation, connect the automatic switch to your bilge pump, uses a time proven micro switch without mercury

<b>Part#</b>	<b>Description:</b>
JP26014	Automatic Float Switch

# MARINE DOMESTIC WATER PUMPS

SWITCHES, BLOWERS, & WATER STRAINERS



## RULE SWITCH PANELS



**RUL45**

### RULE STANDARD 3-WAY SWITCH PANELS

Similar to the Deluxe Model, but without indicator light or fuse holder



**RUL49**

### RULE ON/OFF SWITCH PANELS

For any manually operated system



**RUL41**

### RULE DELUXE 3-WAY SWITCH PANELS

Controls pump with an automatic switch. three positions: Automatic, Off or Manual. Has spring return "OFF" from manual position, stainless steel panel, red indicator light and prewired fuse holder, 12 volt



**RUL43**

### RULE 3-WAY ROCKER PANEL SWITCH

This newly designed unit features a black plastic panel. It has a built-in fuse holder and an internally lighted rocker switch with three positions (Automatic, Off, or Manual)

## TURBO BLOWERS

Turbo Blowers are the first axial-flow fan bilge blowers that are designed using aerospace technology to maximize performance under the real-world pressures of a marine system. Water-resistant blowers include a 3-year limited warranty

**TURBO 3000 BLOWER** draws 2.7 amps and is 5-1/2"L x 5-1/16"W x 3-5/8"H and uses 3" I.D. hose.



**Part#**

**ATT1733-4**

**Description:**

Turbo 3000, 3", White, Water Resistant

**TURBO 4000 BLOWER** draws 3.5 amps and is 5-1/2"L x 6-1/16"W x 4-17/32"H and uses 4" I.D. hose.



**Part#**

**ATT1743-4**

**Description:**

Turbo 4000, 4", White, Water Resistant

## IN-LINE SEAWATER STRAINER

**SHERWOOD**  
The Original Engine Cooling Pump Since 1921



Sherwood seawater strainers give you added filtration without added hassle, being extremely light weight makes this strainer ideal for washdown pumps & generators

**Part#**

**SHR18001**

**SHR18004**

**Description:**

3/4" inlets, Stainless steel screen mesh

1/2" inlets, Stainless steel screen mesh

## EXTREME HIGH FLOW IN-LINE STRAINER

**SHURflo**  
Pentair Water



Shurflo highly recommends the use of the strainer, engineered to compliment the higher performance of Smart sensor, to keep your Extreme Series Pumps flowing strong by protecting it from debris in the water, Easy installation & even easier to clean

**Part#**

**SUR254-366**

**Description:**

50 mesh screen w/ S/S mounting bracket

"SUPPLIED WITH 1/2" MPT FITTINGS