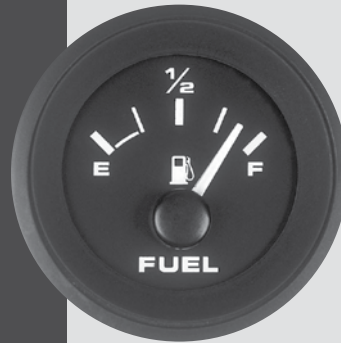




Teleflex®
MARINE

PREMIER PRO

A very popular OEM line, Premier features black dials with modern white and blue graphics. When lighted, white dial grads become red and pointer lights white. These instruments feature automotive type light-piping and a fog-resistant design for outstanding readability.



62718P



62722P

FEATURES:

- Full automotive type lighting, no “halo” around dial edges. When lit, white dial grads become red, pointer lights white.
- Black dial, white graduations/numerals (metrics in blue), white pointer staff.
- Scratch resistant curved glass lenses, with black, near-flush bezels.
- U.S. and metric scales, with ISO symbols, where appropriate.
- Optional add-on square bezels for modular appearance (See Gauge Accessories for details).
- Line includes standard ignition engine synchronizer kits including module.
- Fog-Resistant Design! Complies with SAE J-1810.

SELECTION GUIDE:

GAUGE DESCRIPTION	SIZE	DIAL RANGE	SENDER CODE	PART NUMBER
Fuel Gauge:	2"	E-1/2-F	REQUIRES "F"	TEL62718P
Hourmeter:	2"	10,000 Hrs.	NONE REQUIRED	TEL62719P
Oil Pressure Gauge (Electric): Oil Pressure 80 PSI	2"	0-80 PSI	REQUIRES "C"	TEL62720P
Trim Gauges (Outboard, I/O): Mariner/Merc/Cobra/Volvo DP, SX, Yamaha 2001 and on	2"	UP-DOWN	BY ENG. MFR	TEL62727P
Voltmeter-12 Volt:	2"	8-18 VDC	NONE REQUIRED	TEL62730P
Water Temp. Gauge (I/O, I/B):	2"	120-240°F	REQUIRES "D"	TEL62729P
6 Gauge Set, Fog Free				TEL62715P

** Adapter (P/N 61886P) is required for Yamaha.



MARINE GAUGES

TELEFLEX GAUGES & INSTRUMENTS



DRIFTWOOD

Driftwood features light gray dials, clean black numerals and a black pointer hub with white staff. These instruments lend a sophisticated look to any dash. Combination blue through-dial and white perimeter lighting are included for excellent readability at night.



61549P



61547P

FEATURES:

- Light gray dial, black graduations/numerals, white pointer staff.
- Scratch resistant curved glass lenses, with black, near-flush bezels.
- White perimeter and blue thru-dial lighting.
- U.S. and metric scales, with ISO symbols, where appropriate.
- Optional add-on square bezels for modular appearance (See Gauge Accessories for details).

SELECTION GUIDE:

GAUGE DESCRIPTION	SIZE	DIAL RANGE	SENDER CODE	PART NUMBER
Fuel Gauge:	2"	E-1/2-F	REQUIRES "F"	TEL61549P
Hourmeter:	2"	10,000 Hrs.	NONE REQ'D	TEL62952P
Oil Pressure Gauge (Electric):	2"	0-80 PSI	REQUIRES "C"	TEL61550P
Tachometer (Electric): O/B & 4-Stroke Gas Engines*	3"	0-7000 RPM	O/B ALT./COIL	TEL61546P
Trim Gauges (Outboard, I/O): Mariner/Merc/Cobra/Volvo DP, SX, Yamaha 2001 and on	2"	UP-DOWN	BY ENG. MFR.	TEL61551P
Voltmeter-12 Volt:	2"	8-18 VDC	NONE REQ'D	TEL61548P
Water Temp. Gauge (I/O, I/B):	2"	120-240°F	REQUIRES "D"	TEL61552P

* Mariner 30 & 40 HP (2-cylinder) engines require a module (Mercury P/N 17461A2) when using any of these tachometers. Not tested for non-original-equipment (aftermarket) ignition systems. Not for diesels.

** Adapter (P/N 61886P) is required for Yamaha.



Teleflex[®]
MARINE

LIDO

Hottest selling white dial line! A comprehensive family of instruments for most engine types, Lido features crisp white dials and fire-orange pointer tips. Red through-dial and white perimeter lighting provide great night readability. Excellent inboard coverage with engine sync gauges* and diesel alternator and magnetic pickup tachometers**.

*Module required, not included with gauge.

**Magnetic Pickup sender available separately.



65496P



65129P

FEATURES:

- White dial, black numerals, black pointer with fire-orange tip.
- Scratch resistant curved glass lenses, with polished stainless steel, near-flush bezels.
- U.S. and metric scales, with ISO symbols.
- Optional add-on square bezels for modular appearance (See Gauge Accessories for details).
- White perimeter and red thru-dial lighting.
- Comprehensive line includes tachometers for diesel alternator and magnetic pickup PLUS synchronizer gauge (Suitable for gas or diesel engines with appropriate module. Module required, not included with gauge).

SELECTION GUIDE:

GAUGE DESCRIPTION	SIZE	DIAL RANGE	SENDER CODE	PART NUMBER
Fuel Gauge:	2"	E-1/2-F	REQUIRES "F"	TEL65496P
Hourmeter:	2"	10,000 Hrs.	NONE REQ'D	TEL65497P
Oil Pressure Gauges (Electric): Oil Pressure 80 PSI	2"	0-80 PSI	REQUIRES "C"	TEL65501P
Tachometer (Electric): O/B & 4-Stroke Gas Engines*	3"	0-7000 RPM	O/B ALT./COIL	TEL65693P
Tachometer/Hourmeters (Electric): O/B & 4-Stroke Gas Engines*	3"	0-7000 RPM	O/B ALT./COIL	TEL65129P
Trim Gauges (Outboard, I/O): Mariner/Merc/Cobra/Volvo DP, SX, Yamaha 2001, and on	2"	UP-DOWN	BY ENG. MFR.	TEL65504P
Voltmeter-12 Volt:	2"	8-18 VDC	NONE REQ'D	TEL65506P
Water Temp. Gauge (I/O, I/B):	2"	120-240°F	REQUIRES "D"	TEL65509P

* Mariner 30 & 40 HP (2-cylinder) engines require a module (Mercury P/N 17461A2) when using any of these tachometers. Not tested for non-original-equipment (aftermarket) ignition systems. Not for diesels.

** Adapter (P/N 61886P) is required for Yamaha.



MARINE GAUGES

TELEFLEX GAUGES & INSTRUMENTS

Teleflex® MARINE

SAHARA

With crisp tan dials and fire-orange pointer tip, Sahara gives any dash the elegant OEM look. Combined red through-dial and white perimeter lighting provide great night readability. These aren't merely "close enough" — they're the real thing!



61908P



69704P

FEATURES:

- Tan dial and retainer, black graduations and numerals, black pointer with fire-orange tip.
- Scratch resistant curved glass lenses, with black matte, near-flush bezels.
- White perimeter and red thru-dial lighting.
- U.S. and metric scales, with ISO symbols, where appropriate.
- Optional add-on square bezels for modular appearance (See Gauge Accessories for details).

SELECTION GUIDE:

GAUGE DESCRIPTION	SIZE	DIAL RANGE	SENDER CODE	PART NUMBER
Fuel Gauge:	2"	E-1/2-F	REQUIRES "F"	TEL59707P
Oil Pressure Gauge (Electric):	2"	0-80 PSI	REQUIRES "C"	TEL59705P
Tachometer (Electric): O/B & 4-Stroke Gas Engines*	3"	0-7000 RPM	O/B ALT./COIL	TEL59703P
Trim Gauges (Outboard, I/O): Mariner/Merc/Cobra/Volvo DP, SX, Yamaha 2001 and on	2"	UP-DOWN	BY ENG. MFR.	TEL59709P
Voltmeter-12 Volt:	2"	8-18 VDC	NONE REQ'D	TEL59708P
Water Temp. Gauge (I/O, I/B):	2"	120-240°F	REQUIRES "D"	TEL59706P
6 Gauge Set				TEL65485P

* Mariner 30 & 40 HP (2-cylinder) engines require a module (Mercury P/N 17461A2) when using any of these tachometers. Not tested for non-original-equipment (aftermarket) ignition systems. Not for diesels.

** Adapter (P/N 61886P) is required for Yamaha.



Teleflex®

MARINE

STERLING

Ideal for outboards and stern drives! With stainless steel bezels, brushed aluminum dials and black pointers, Sterling instruments give a bright, gleaming look to any dash. Perimeter lighting provided for night operation.



63477P



63475P

FEATURES:

- Brushed aluminum dial, black graduations/numerals, black pointer.
- Scratch resistant curved glass lenses, with polished stainless steel, near-flush bezels.
- Perimeter lighting.
- U.S. and metric scales, with ISO symbols, where appropriate.
- Optional add-on square bezels for modular appearance (See Gauge Accessories for details).

SELECTION GUIDE:

GAUGE DESCRIPTION	SIZE	DIAL RANGE	SENDER CODE	PART NUMBER
Fuel Gauge:	2"	E-1/2-F	REQUIRES "F"	TEL63477P
Oil Pressure Gauge (Electric):	2"	0-80 PSI	REQUIRES "C"	TEL63479P
Tachometer (Electric): O/B & 4-Stroke Gas Engines*	3"	0-7000 RPM	O/B ALT./COIL	TEL63473P
Trim Gauges (Outboard, I/O): Mariner/Merc/Cobra/Volvo DP, SX, Yamaha 2001 and on	2"	UP-DOWN	BY ENG. MFR.	TEL63482P
Voltmeter-12 Volt:	2"	8-18 VDC	NONE REQ'D	TEL63478P
Water Temp. Gauge (I/O, I/B):	2"	120-240°F	REQUIRES "D"	TEL63480P

* Mariner 30 & 40 HP (2-cylinder) engines require a module (Mercury P/N 17461A2) when using any of these tachometers. Not tested for non-original-equipment (aftermarket) ignition systems. Not for diesels.

** Adapter (P/N 61886P) is required for Yamaha.



MARINE GAUGES

TELEFLEX GAUGES & INSTRUMENTS

Teleflex® MARINE

GOLD STERLING

Gold Sterling instruments feature crisp stainless steel dials with a white staff. These gauges provide a modern look for any dash with bright gold and black graphics. Gold Sterling gauges are versatile enough to match any dash. It also complements a variety of wood, allowing you the design flexibility to create your own distinctive look.



67176F



67106F

FEATURES:

- Domed glass lens.
- Perimeter lit dial.
- Stainless steel elite bezel.
- Anti-Fog* coated lens.
- Blue bulb lighting.
- Black & Gold graphics on spun aluminum background dial.
- White pointer.
- Perimeter Blue lighting.
- Matching digital depth gauge available as well.
- Fits most stern drive and outboard applications.
- US and Metric scales where appropriate.

* Complies with SAE J-1810.

SELECTION GUIDE:

GAUGE DESCRIPTION	SIZE	DIAL RANGE	SENDER CODE	PART NUMBER
Oil Pressure Gauge (Electric):	2"	0-80 PSI	REQUIRES "C"	TEL67104P
Tachometer (Electric): O/B & 4-Stroke Gas Engines*	3"	0-7000 RPM	O/B ALT./COIL	TEL67107P
Trim Gauges (Outboard, I/O): Yamaha 2001 and on	2"	UP-DOWN	BY ENG. MFR.	TEL67103P
Voltmeter-12 Volt:	2"	8-18 VDC	NONE REQ'D	TEL67102P
Water Temp. Gauge (I/O, I/B):	2"	120-240°F	REQUIRES "D"	TEL67105P



Teleflex®
MARINE

BLACK STERLING

With its rich luster and polish, Black Sterling instruments convey a look of utmost sophistication and add elegance to any dash. These instruments have fire-orange pointer tips and stainless graphics for a contemporary, ultra stylish look. Black Sterling instruments have clean, crisp black dials which highlight the stainless accents.



67022P



67285PH

FEATURES:

- Scratch-resistant domed glass lens.
- Perimeter lit dial.
- Elite stainless steel bezel.
- Black pointer with fire orange tip.
- White graphics and black background on spun aluminum dial.
- Fits most stern drive and outboard applications.
- US and Metric scales where appropriate.

SELECTION GUIDE:

GAUGE DESCRIPTION	SIZE	DIAL RANGE	SENDER CODE	PART NUMBER
Fuel Gauge	2"	E-1/2-F	Code F	TEL67021P
Voltmeter	2"	8-18 VDC	N/R	TEL67019P
Water Temperature (Electric)	2"	100-240°F	Code D	TEL67020P
Oil Pressure (Electric)	2"	0-80 PSI	Code C	TEL67022P
Speedometer Kit	3"	0-70 MPH	Includes G	TEL67285P
Tachometer: O/B & 4 Cycle Gas	3"	0-7000 RPM	O/B Alt or Coil	TEL67363P
Trim: Mariner/Mercury Yamaha, 2001 to date	2"	UP-DOWN	Eng Mfr supply	TEL67023P



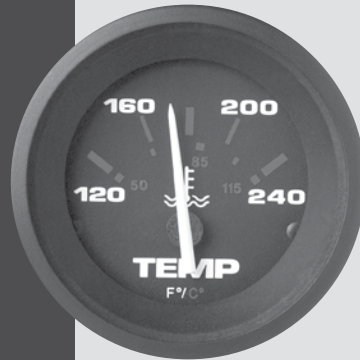
MARINE GAUGES

TELEFLEX GAUGES & INSTRUMENTS

Teleflex® MARINE

AMEGA

Hottest selling black dial line! Amega® Domed has clean-looking black dials with white and red graphics plus through-dial and perimeter lighting for great readability. Amega has been very popular, available in several styles since its debut in 1986.



57904P



57900P

FEATURES:

- Black dial, red graduations, white numerals, vivid white pointer staff.
- Scratch resistant curved glass lenses, with black, near-flush bezels.
- U.S. and metric scales, with ISO symbols, where appropriate.
- Perimeter and thru-dial lighting.
- A comprehensive array of outboard water pressure instrument kits.
- Optional add-on square bezels for modular appearance (See Gauge Accessories for details).

SELECTION GUIDE:

GAUGE DESCRIPTION	SIZE	DIAL RANGE	SENDER CODE	PART NUMBER
Fuel Gauge:	2"	E-1/2-F	REQUIRES "F"	TEL57902P
Hourmeter:	2"	10,000 Hrs.	NONE REQ'D	TEL84760P
Oil Pressure Gauges (Electric): Oil Pressure 80 PSI	2"	0-80 PSI	REQUIRES "C"	TEL57903P
Tachometer (Electric): O/B & 4-Stroke Gas Engines*	3"	0-7000 RPM	O/B ALT./COIL	TEL58255P
Tachometer/Hourmeter (Electric): Mariner/Merc/Cobra/Volvo DP, SX, Yamaha 2001 and on	2"	UP-DOWN	BY ENG. MFR.	TEL57905P
Voltmeter-12 Volt:	2"	8-18 VDC	NONE REQ'D	TEL57901P
Water Temp. Gauge (I/O, I/B):	2"	120-240°F	REQUIRES "D"	TEL57904P

*Mariner 30 & 40 HP (2-cylinder) engines require a module (Mercury P/N 17461A2) when using any of these tachometers. Not tested for non-original-equipment (aftermarket) ignition systems. Not for diesels.

** Adapter (P/N 61886P) is required for Yamaha.



ARCTIC

Teleflex
MARINE

Stylish white bezel design, black on white graphics, accurate and reliable, these tough instruments look good on all types of boats. Domed glass sheds water and resists scratching.



69383P



68371P

FEATURES:

- Instruments available for most outboards, stern drives and gasoline-powered inboards.
- Scratch-resistant domed glass lenses.
- Enhanced illumination: through-dial and perimeter lighting for excellent readability at night.
- Low-range speedometers.
- U.S. and metric scales, with ISO symbols, where appropriate.
- Optional add-on square bezels for modular appearance (See Gauge Accessories for details).

SELECTION GUIDE:

GAUGE DESCRIPTION	SIZE	DIAL RANGE	SENDER CODE	PART NUMBER
Fuel Gauge	2"	(E-F)	N/R	TEL68365P
Hourmeter	2"	10,000 hrs		TEL68366P
Eng Oil Pressure gauge 0-80 PSI	2"	0-80 PSI	C	TEL68367P
Water Pressure Kits (Outboard): (Each kit includes fittings and 20 feet of tubing).	2"	0-40 PSI	WP(included)	TEL68369P
Tachometer 0-7000 RPM	3"	0-7000 RPM	O/B Alt or Coil	TEL68374P
I/O, I/B Water Temp Gauge	2"	120-240°F	D	TEL68376P
Trim, Mariner/Merc, Yamaha 2001	2"	UP-DOWN	Eng Mfr supply	TEL68380P
12v Voltmeter, 8-18 Volts	2"	8-18 VDC	N/R	TEL68383P
Instrument Set "INBOARD/STERNDRIVE" 6 Gauge set				TEL68388P



MARINE GAUGES

TELEFLEX GAUGES & INSTRUMENTS

Teleflex® MARINE

ECLIPSE

Smart white and blue graphics on a black dial background, these very low profile bezels follow the curve of the lense to eliminate water trapping. Design with domed glass sheds water and resists scratching.



68390P



68397P

FEATURES:

- Instruments available for most outboards, stern drives and gasoline-powered inboards.
- Scratch-resistant domed glass lenses.
- Perimeter lighting for excellent readability at night.
- U.S. and metric scales, with ISO symbols, where appropriate.
- Optional add-on square bezels for modular appearance (See Gauge Accessories for details).

SELECTION GUIDE:

GAUGE DESCRIPTION	SIZE	DIAL RANGE	SENDER CODE	PART NUMBER
Fuel Gauge	2"	(E-F)	N/R	TEL68390P
Hourmeter	2"	10,000 hrs		TEL68391P
Eng Oil Pressure gauge 0-80 PSI	2"	0-80 PSI	C	TEL68392P
Water Pressure Kits (Outboard): (Each kit includes fittings and 20 feet of tubing).	2"	0-40 PSI	WP (included)	TEL68394P
Tachometer 0-7000 RPM	3"	0-7000 RPM	O/B Alt or Coil	TEL68399P
I/O, I/B Water Temp Gauge	2"	120-240°F	D	TEL68401P
Trim, Mariner/Merc, Yamaha 2001	2"	UP-DOWN	Eng Mfr supply	TEL68405P
12v Voltmeter, 8-18 Volts	2"	8-18 VDC	N/R	TEL68408P
Instrument Set "INBOARD/STERNDRIVE" 6 Gauge set				TEL68413P



Teleflex®
MARINE

HEAVY DUTY

A classic line for inboards including diesels, Heavy Duty includes mechanical water temperature and oil pressure gauges, ammeters, engine sync gauges* and a range of diesel tachometers, including a programmable tach/hourmeter.

*Module required, not included with gauge.



80150P



80514P

FEATURES:

- Classic white graphics and pointer on deep black faces.
- Low-profile polished stainless steel bezels.
- Perimeter lighting and scratch resistant glass lenses.
- Tachometers for diesels available.
- Several temperature and mechanical oil pressure gauges available.
- Programmable tach/hourmeter offered.
- Ideal replacement for Stewart-Warner® "Deluxe" instruments.
- Optional add-on square bezels for modular appearance (See Gauge Accessories for details).

SELECTION GUIDE:

GAUGE DESCRIPTION	SIZE	DIAL RANGE	SENDER CODE	PART NUMBER
Fuel Gauge:	2"	E-1/2-F	REQUIRES "F"	TEL80150P
Hourmeter:	2"	10,000 Hrs.	NONE REQ'D.	TEL82760P
Oil Pressure Gauges (Electric): Oil Pressure 80 PSI	2"	0-80 PSI	REQUIRES "C"	TEL80180P
Tachometer O/B & 4-Stroke Gas Engines*	3"	0-6000 RPM	O/B ALT./COIL	TEL82288P
Water Temp. Gauge (Electric): Water Temp 240°F	2"	120-240°F		TEL80590P
Voltmeters-12 & 24 Volt: 12 Volt System	2"	10-16 VDC	NONE REQ'D.	TEL80134P