



MARINE BATTERIES

BLUE JACKET MARINE BATTERIES



12-VOLT MARINE STARTING BATTERIES

GROUP NO.	PART #	PERFORMANCE LEVEL			SUGG. WARR.	WEIGHT WET	MAX OVERALL DIMENSIONS		
		CCA	MCA	RES. CAP.			LENGTH	WIDTH	HEIGHT
24	LLM24-M7	875	1000	125	24	45	10-3/4"	6-3/4"	9-3/8"
24	LLM24-M6	650	820	120	24	40			
24	LLM24-M5	550	650	90	24	35.5			
24	LLM24-M4	460	575	70	24	32			
27	LLM27-M6	840	1050	182	24	56	12-1/2"	6-3/4"	9-3/8"

12-VOLT MARINE DUAL PURPOSE STARTING BATTERIES

GROUP NO.	PART #	PERFORMANCE LEVEL					SUGG. WARR.	WEIGHT WET	MAX OVERALL DIMENSIONS		
		CCA	MCA	MINS @ 23 AMPS	MINS @ 25 AMPS	20 AH CAP			LENGTH	WIDTH	HEIGHT
24	LLMDP-24	550	685	140	120	65	24	42	10-3/4"	6-3/4"	9-3/8"
27	LLMDP-27	650	810	175	150	80	24	49	12-1/2"		9-1/2"
31	LLMDP-31	700	875	205	182	100	24	57	13"		9-1/2"

12-VOLT MARINE DEEP CYCLE BATTERIES

GROUP NO.	PART #	PERFORMANCE LEVEL					SUGG. WARR.	WEIGHT WET	MAX OVERALL DIMENSIONS		
		CCA	MCA	MINS @ 23 AMPS	MINS @ 25 AMPS	20 AH CAP			LENGTH	WIDTH	HEIGHT
24	LLMDC-24	500	625	150	130	75	24	45	10-3/4"	6-3/4"	9-3/8"
27	LLMDC-27	575	715	200	175	90	24	53	12-1/2"		9-1/2"
31	LLMDC-31	650	810	225	185	105	24	59	13"		9-1/2"

12-VOLT MARINE HEAVY DUTY COMMERCIAL BATTERIES

GROUP NO.	PART #	PERFORMANCE LEVEL				SUGG. WARR.	WEIGHT		MAX OVERALL DIMENSIONS		
		CCA	RES. CAP.	MCA	20 HR CAP		WET	DRY	LENGTH	WIDTH	HEIGHT
4D	LLM4D-3	1050	290	1280	198	30	97	58	20-3/4"	8-1/2"	10"
8D	LLM8D-3	1400	430	1700	245	30	130	80		11	

12-VOLT MARINE PERSONAL WATERCRAFT BATTERIES

GROUP NO.	PART #	PERFORMANCE LEVEL				SUGG. WARR.	WEIGHT WET	MAX OVERALL DIMENSIONS		
		CCA	RES. CAP.	REF. MCA	10 HR CAP			LENGTH	WIDTH	HEIGHT
16	LLM-ETX16LM	275	10 HR Capacity = 19		6	17	6-7/8"	4"	6-1/8"	
16	LLM-ETX20L	270	10 HR Capacity = 17.5		6	15.5		3-7/16"		





All Your Battery Needs

Roto-Molded Battery Boxes

Moeller's complete line of roto-molded battery boxes come in 6 sizes, and are seamlessly designed to tackle the elements for long-life battery performance.

- Non-corrosive high-strength polyethylene construction resists chemicals and rust.
- Maintains tough properties with nominal 0.185" wall thickness on roto-molded (grey) boxes.
- Complies to industry requirements and meets Coast Guard regulations (E10).

<p>HOLDS One 4D Battery</p>  <p>MOE42204 23.63"L x 12.50"W x 14.63"H</p>	<p>HOLDS Two Standard Batteries</p>  <p>MOE42212 - Low 17.50"L x 13.00"W x 13.00"H</p>
<p>HOLDS One 8D Battery</p>  <p>Part No. Capacity / Dimensions MOE42208 25.00"L x 15.00"W x 13.06"H - Low MOE42209 24.56"L x 14.75"W x 15.44"H - High (Shown)</p>	<p>HOLDS Two 8D Batteries</p>  <p>Part No. Capacity / Dimensions MOE42210 27.50"L x 24.50"W x 14.00"H - Low MOE42211 27.50"L x 24.50"W x 16.25"H - High (Shown)</p>

Battery Trays



Part No.	Description
MOE42215	24 Series Battery Tray
MOE42216	27 & 30 Series Battery Tray

REPLACEMENT Battery Strap



Part No.	Description
MOE42217-10	39" Battery Strap

- Includes Footman Loops & Stainless Steel Screws

Battery Terminal Covers



- Meets Coast Guard safety regulations for anti-short protection.
- Accepts up to 1/2" O.D. cable with flexible PVC covers.
- Set includes (1) black and (1) red cover.

Part No.	Description
MOE99078-10	Battery Terminal Cover Set

© Moeller Marine Products, Inc.



MARINE BATTERIES

BATTERY BOXES, TRAYS, & STRAPS



Part#

ATT9013A3

Description:

Straps are woven polypropylene with "firm-grip" buckles and are completely resistant to battery acid, 56" long, fits ATT9084-1 battery box



Part#

ATT9090-5

Description:

Heavy-duty, non-corrosive black plastic. Includes adjustable-height crossbar and two retaining bolts, 10-5/8" x 6-3/4" x 8-1/4", for group 24 batteries



Part#

ATT9091-5

Description:

Heavy-duty, non-corrosive black plastic. Includes adjustable-height crossbar and two retaining bolts, 12-1/8" x 6-3/4" x 8-1/4", for group 27 batteries



Part#

T-HNBH-27S

Description:

Heavy-duty, non-corrosive stainless steel rods, Includes adjustable-height crossbar and two retaining bolts, 12-1/8" x 6-3/4" x 8-1/4", for group 27 batteries



Part#

ATT9092-5

Description:

A simple-to-install battery holder that fits into a limited space, The polypropylene hold-down strap has a positive locking, quick disconnect buckle, for group 24 batteries



Part#

ATT9093-5

Description:

A simple-to-install battery holder that fits into a limited space, The polypropylene hold-down strap has a positive locking, quick disconnect buckle, for group 27 batteries



Polypropylene, acid resistant, Hold-down straps resist 350 pounds of force, drop tested in temperatures ranging from -20°F to +120°F

Part#

ATT9065-1

Description:

Inside: 11-1/8" x 7-3/4" x 10-1/8"
Outside: 14" x 9-5/8" x 10-5/8"
4 cable openings, enlarged to .55" dia.
Group: 24 series



Part#

ATT9067-1

Description:

Inside: 13-7/8" x 7-1/4" x 10-1/2"
Outside: 16-7/8" x 9-5/8" x 10-7/8"
4 cable openings, enlarged to .55" dia.
Group: 27 series



Part#

ATT9084-1

Description:

Inside: 15-7/16" x 7-1/8" x 9-3/4"
Outside: 18-3/4" x 9-1/4" x 10-1/4"
4 cable openings, enlarged to .55" dia.
Group: 31



Part#

P.W.C. BATTERY BOX

ATT9082-1

Description:

Inside: 8-1/4" x 5-1/2" x 7-7/8"
Outside: 11" x 7-1/2" x 8-3/4"
4 cable openings, enlarged to .55" dia.
Group: 16 series



MARINE BATTERIES

BATTERY SWITCHES



350A Continuous Rating - 45% higher than standard switches, Accepts up to 4/0 battery cables, Luminous label for low light reading, Ignition protected, Safe for installation aboard gasoline powered boats, 3/8"-16 tin-plated copper studs for maximum conductivity and corrosion resistance, Make-before-break contact design for switching between battery banks without power interruption, Case design allows surface or flush mounting, 3.850" sq x 3.097" h



Part#

BLU9001E

Description:

Four position switch
1, 2, Both, Off



Part#

BLU9002E

Description:

Four position switch
w/ Alternator field
disconnect



Part#

BLU5511E

Description:

E-series battery switch
Dual Circuit



Part#

BLU9003E

Description:

On / Off switch



Part#

BLU9004E

Description:

On / Off switch
w/ Alternator field
disconnect



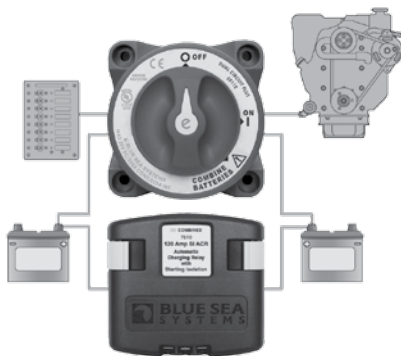
Part#

BLU6006

Description:

M-series (mini) battery
switch, single circuit On/
Off, replaces 9006

"ADD-A-BATTERY KIT"



Part#

BLU7650

Description:

isolates engine and
house circuits, and
combines battery banks
for emergency starting



Part#

BLU6005

Description:

M-series (mini) battery switch,
single circuit On/Off w/ Key,
replaces 9005



Part#

BLU7900

Description:

Replacement key for 6005

CH Cole Hersee Co.

310 Amps Continuous • 500 Amps Intermittent • 6-36 VDC, surface mount or install through a panel, high impact and high temperature engineered plastic case, knob and insulator, Vapor proof, weatherproof, dustproof and corrosion resistant, Three 3/8" diameter heavy duty copper stud terminals with brass hex nuts, 6" dia. x 2 5/8" h



Part#

COLM-750-BP

Description:

Four position switch
1, 2, Both, Off



Part#

COLM-751-BP

Description:

Four position switch
w/ lock



Part#

COLM-752-BP

Description:

Four position switch
w/ Alternator field
disconnect



MARINE BATTERIES

POWER POSTS, CABLE CLAMS & CAPS



Powerpost high amperage cable connector, 48 volts DC max with a reinforced thermoplastic base



Part#	Description:
BLU2002	5/16" x 7/8" Stud
BLU2003	3/8" x 7/8" Stud

Powerpost high amperage cable connector, 48 volts DC max with a reinforced thermoplastic base, also accepts small wire connections



Part#	Description:
BLU2102	5/16" x 7/8" Stud
BLU2103	3/8" x 7/8" Stud

"MINI" Powerpost high amperage cable connector, 48 volts DC max with a reinforced thermoplastic base



Part#	Description:
BLU2011	1/4" x 3/4" Stud

"DUAL" Powerpost high amperage cable connector, 48 volts DC max with a reinforced thermoplastic base, for outboard engine installation

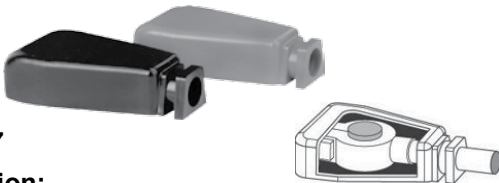


Part#	Description:
BLU2018	1x5/16", 1x3/8" Stud

Part#
BLU4017

Description:

Automotive style cable caps, fits standard posts, for cable size 1/0 & 2/0, color red / black, material PVC

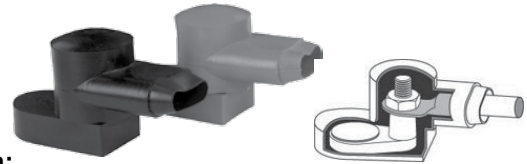


Part#

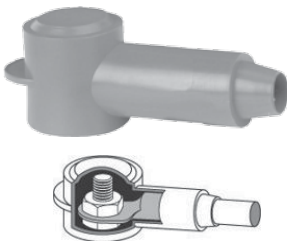
BLU4001

Description:

Rotating cable caps, top rotates 360°, for batteries with wing nut posts, for cable size 1/0 & 2/0, color red / black, material PVC

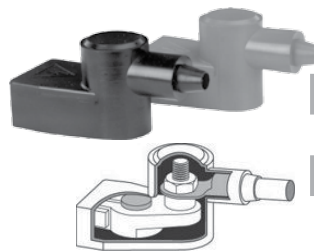


Insulate stud type connectors on alternators, starters, windlasses and other high amperage devices material PVC



Part#	Description:
BLU4008	Cable size 18-10
BLU4010	Cable size 8-4
BLU4012	Cable size 2-2/0
BLU4013	(Cable size 2-2/0 color black)

Standard cable caps, for batteries with marine adaptor terminals added on, color red / black



Part#	Description:
BLU4005	Cable size 4, 2, 1
BLU4006	Cable size 1/0, 2/0

Cable Clams, perfect for antenna installation, Waterproof co-axial installation without removing connectors



Part#	Description:
BLU1001	Max .625", GPS, Loran, TV
BLU1002	Max .825", VHF, small rader
BLU1003	Max 1.385", Radar, multi cables

Cable grip, can be used anywhere that a cable must pass through a deck or bulkhead while maintaining a waterproof fitting



Part#	Description:
BLU1005	Cable size 1-3/0
BLU1006	Cable size 4/0



BATTERY CABLES

Marine grade battery cable, heat shrunk ends to reduce corrosion Positive (red) has 3/8" tinned copper lugs & Negative (black) has 5/16" tinned copper lugs

Part#	Gauge	Length	Color
GENBC88583	1	8'	RED
GENBC88593	1	8'	BLACK
BJM2X12-R	2	12"	RED
BJM2X12-B	2	12"	BLACK
SNJ200144	2	18"	RED
SNJ200134	2	18"	BLACK
SNJ200164	2	24"	RED
SNJ200154	2	24"	BLACK
BJM2X36-R	2	36"	RED
BJM2X36-B	2	36"	BLACK
GENBC88543	2	4'	RED
GENBC88553	2	4'	BLACK
GENBC88563	2	6'	RED
GENBC88573	2	6'	BLACK
SNJ200024	4	24"	RED
SNJ200014	4	24"	BLACK



BATTERY LUGS

Made from 98% tin plated copper, available individual or bulk packs of 25 per bag

Part#	Gauge	Stud Size
CAC65826	8	#10
CAC65849	8	5/16"
CAC65850	8	3/8"
CAC65827	6	1/4"
CAC65848	6	3/8"
CAC35828	4	1/4"
CAC35829	4	5/16"
CAC35830	4	3/8"
CAC35831	2	1/4"
CAC35832	2	5/16"
CAC35833	2	3/8"
CAC35846	1	3/8"
CAC65851	1	5/16"
CAC35835	1/0	3/8"
CAC35836	1/0	1/2"
CAC35838	2/0	3/8"
CAC35839	2/0	1/2"



Part#

GENEC10250

Description:

Battery test clips / holders, 3/4" 50 amp, red & black rubber coated grips, material copper

MARINCO



Part#

MAR12VTR

Description:

12V battery direct connect, multi connection battery terminals



Part#

ATT14215-3

Description:

Lead terminals with wing nuts & cadmium plated bolts, clamps are stamped with negative (-) & positive (+) sign



Part#

BJARB888L-2

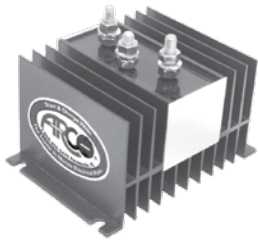
Description:

Heavy-Duty top post epoxy coated terminals, fits 6 to 1 gauge cables, positive (+) red, negative (-) black



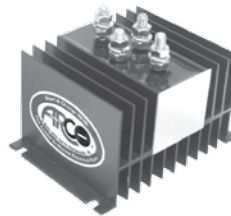
MARINE BATTERIES

BATTERY ISOLATORS & CHARGERS



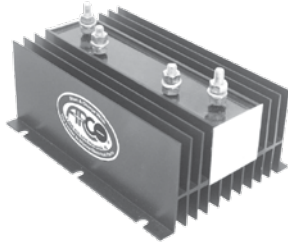
Part#
ARCBI-0702

Description:
Inboard, 1 alternator,
2 batteries,
70 amp maximum



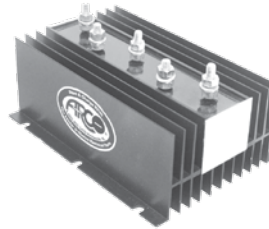
Part#
ARCBI-0703

Description:
Inboard, 1 alternator,
3 batteries,
70 amp maximum



Part#
ARCBI-2702

Description:
Inboard, 2 alternators,
2 batteries,
70 amp maximum



Part#
ARCBI-2703

Description:
Inboard, 2 alternators,
3 batteries,
70 amp maximum



For Flooded, Gel and AGM Batteries, Fully Potted to Waterproof Electronics, Maintenance Mode protects batteries during storage, Battery System: 1-12V, Output Voltage: 12VDC, Vibration and Shock Protected



Part#
GUE2608A
Description:
1 bank, 6 amps



Part#
GUE2611A
Description:
2 banks, 10 amps



Part#
GUE2613A
Description:
3 banks, 15 amps

Capable of charging up to three separate banks of batteries at the same time. It incorporates a microprocessor that constantly monitors battery voltage, then automatically selects one of four operating modes to ensure safe, rapid recharging cycles. The Storage Mode and the Equalize Mode of operation ensures minimum battery gassing and water loss while preventing battery stratification and sulfation. All Intelli-Power chargers are designed to meet the stringent requirements of the Marine environment and are UL listed for safety. A digital meter displays current, voltage, operation mode, blown fuse indication, and battery type



Part#	Description:
PD2120V	3 bank, 20 amp
PD2130V	3 bank, 30 amp
PD2140V	3 bank, 40 amp
PD2150V	3 bank, 50 amp
PD2160V	3 bank, 60 amp