



MARINE IGNITION COMPONENTS

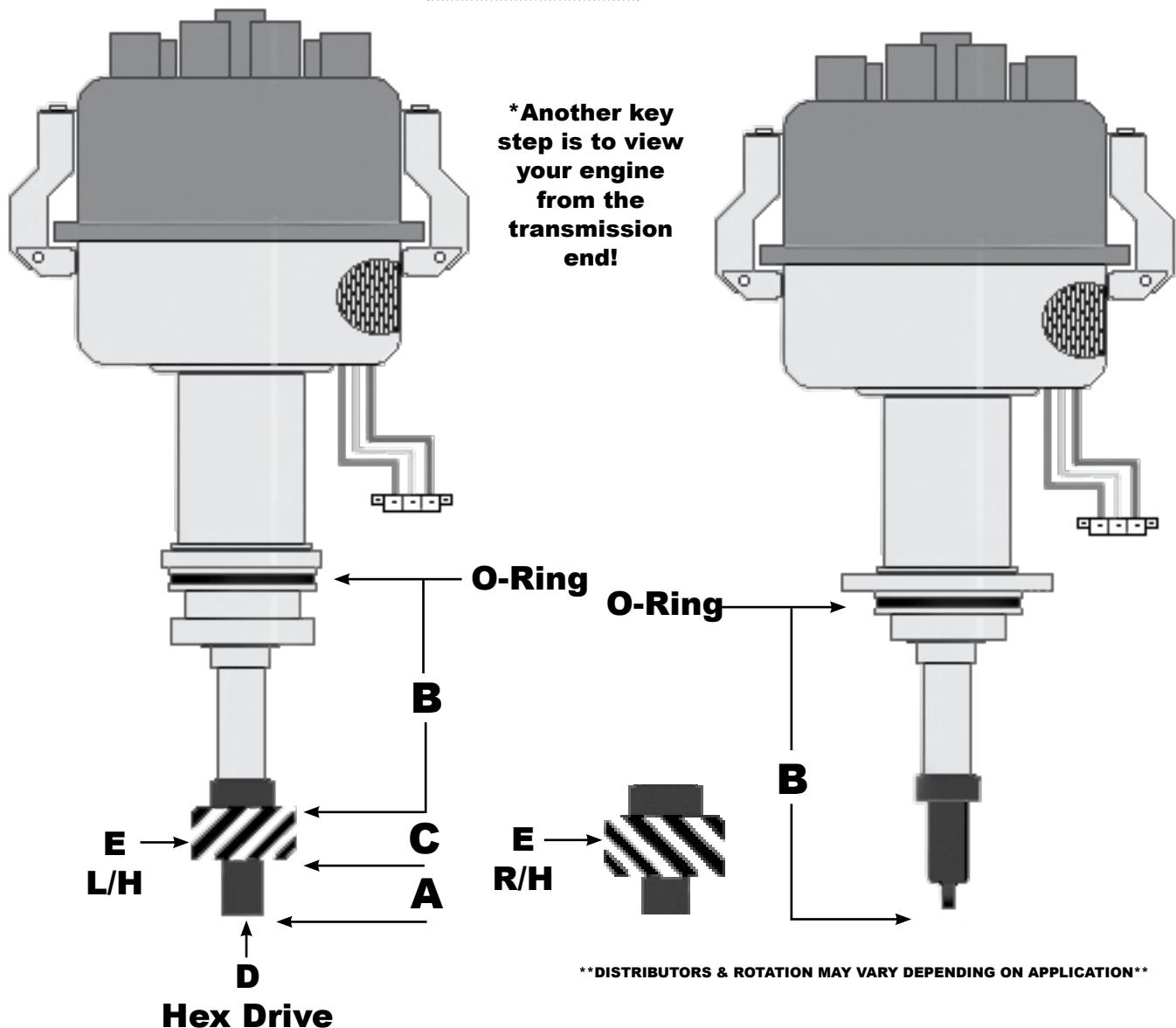
IGNITION DISTRIBUTOR IDENTIFICATION

ELECTRONIC IGNITION DISTRIBUTORS

When determining the Length & Rotation of Distributor there are four "KEY" steps you must do

- A: Measure the bottom of the drive to the bottom of the gear**
- B: Measure from the top of the gear to the top of the "O-Ring"**
- C: Measure the width of the gear (add A, B, C together to for full length)**
- D: Measure the inside of the drive, then determine the make of the drive**
- E: To determine rotation you must look at the way the gear is cut (LH / RH)**

*For Distributors w/ a male tang you must measure from the bottom of the drive to the top of the "O-Ring"



MARINE IGNITION COMPONENTS

ELECTRONIC IGNITION CONVERSION KITS



SIERRA ELECTRONIC IGNITION CONVERSION KITS

Easy to install one-piece, 2-wire hook-up, Accurate to within 1/4 Degree timing accuracy 0-6000 RPM, Replaces points and condensers for true solid state ignition, Economical alternative to replacing entire distributor



Part#
18-5296-2

Description
Fits most Mallory YL or YD 8 cyl. Distributors w/ tall cap



Part#
18-5297

Description
Fits 4 cyl. GM Delco 181, & 153 cu in., also Mercruiser 470 4 cyl. aluminum block engines



Part#
18-5298

Description
Fits most Prestolite V8 Distributors w/ "Clip down cap"



Part#
18-5299

Description
Fits most Prestolite V8 Distributors w/ "Screw down cap"

MALLORY E-SPARK CONVERSION KITS FOR POINT DISTRIBUTORS



Part#
MAL9-26900

Description
Fits Delco 4 cylinder distributors



Part#
MAL9-26902

Description
For Prestolite 8 cylinder distributors with screw down cap



Part#
MAL9-26903

Description
For Prestolite 8 cylinder distributors with clip down cap



Part#
MAL9-26904

Description
For Mallory 8 cylinder YL & YD series with stack cap



Part#
MAL9-26905

Description
For Mallory 8 cylinder YL & YD series with flat cap



MARINE IGNITION COMPONENTS

ELECTRONIC IGNITION CONVERSION KITS & COMPONENTS

MALLORY MARINE SUPER STOCK IGNITION SYSTEM



Part#
MAL9-26000

Description
Ignition System for SB & BB Chevy based engines, 305-454 & 502 cid engines, except 348, 409 & tall block engines

Features:

YLM Series Electronic Breakerless Distributor – provides improved performance and combustion efficiency, improved spark plug life, accurate spark timing and reduced maintenance. Our Thermal-Clad® ignition module combines the triggering mechanism and amplifier into a single unit for greater reliability in extreme marine conditions

ProMaster Spark Plug Wire Set – High Performance custom fit wires with ultra low resistance delivers high energy output for maximum spark and longer spark duration. Superior construction features assure this is the last wire set you will ever need.

High Output Ignition Coil – built specifically for electronic ignition this coil delivers added voltage to properly ignite the fuel in performance marine engines. Oil filled design and arc resistant alkyd top provide superior insulation and cooling. Fits in OEM coil bracket.



Part#
MAL9-29801

Description
Magnetic Breakerless Ignition Module for "YLM" series



Part#
MAL9-29802

Description
Used for Mallory Marine Unilite distributor, (YLU) series

PRESTOLITE REPLACEMENT PARTS FOR THE 92-301 ELECTRONIC IGNITION

Indmar



IND75-1001
Prestolite distributor



MAL9-29701
Prestolite coil

MAGSTAR



MAG801
8mm wire set
Life time warranty

Prestolite electric



PRS65-191
Prestolite module

Sierra



18-5352
Distributor screw cap

Sierra



18-5403
Rotor

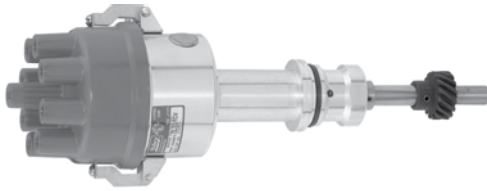
Sierra



18-0874
Mounting gasket

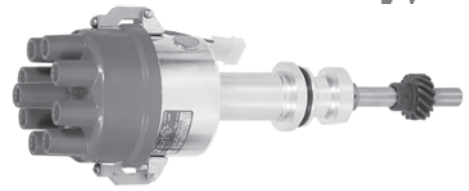
MARINE IGNITION COMPONENTS

ELECTRONIC IGNITION DISTRIBUTORS



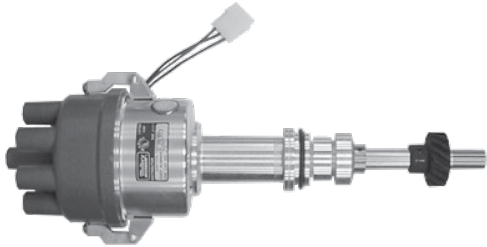
Part#
MAL9-26301
MALYLM512DV

Description
Ford 302 CID V8 engines L/H
Ford 302 CID V8 engines R/H



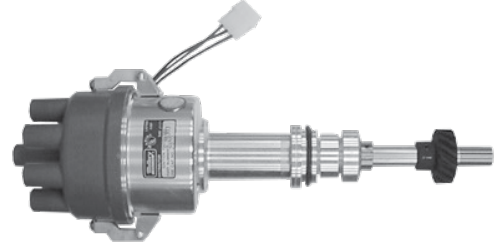
Part#
MAL9-26302
MALYLM554DV

Description
Ford 351 CID V8 Winsor L/H
Ford 351 CID V8 Winsor R/H



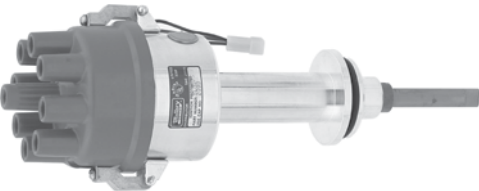
Part#
MAL9-26303

Description
Ford 351 & 460 CID V8
Cleveland L/H



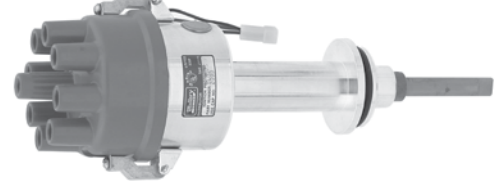
Part#
MALYLM567FV

Description
Ford 351 & 460 CID V8
Cleveland R/H



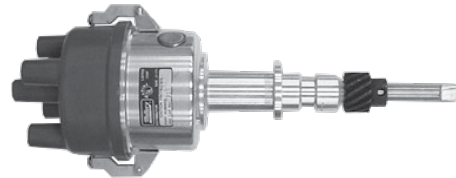
Part#
MAL9-26304

Description
Chrysler 440 w/ 3-5/8" Length,
replaces YLM578AV



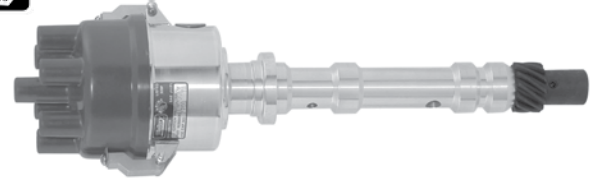
Part#
MAL9-26305

Description
Chrysler V8 273, 318 (67 & up), 340,
360 CID "LM" engines, both LH/RH
rotation, replaces 18-5497-1, YLM579AV



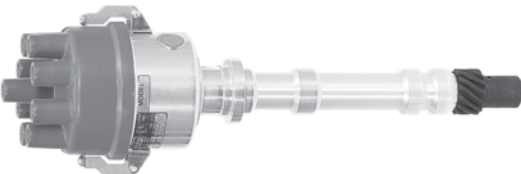
Part#
MAL9-26106
MAL9-26308

Description
For GM 4 cyl. 120 & 140 hp engines,
standard rotation "Points" type
For GM 4 cyl. 120 & 140 hp engines,
standard rotation "Electronic Ignition"



Part#
MAL9-26310

Description
Chevrolet V6 L/H ,4.3L/262
engines, (even fire)



Part#
MAL9-26306

Description
Chevrolet V8 L/H ,262-454, 502
engines except 348, 409 and tall
block engines



Part#
MAL9-26307

Description
Chevrolet V8 R/H ,262-454, 502
engines except 348, 409 and tall
block engines



MARINE IGNITION COMPONENTS

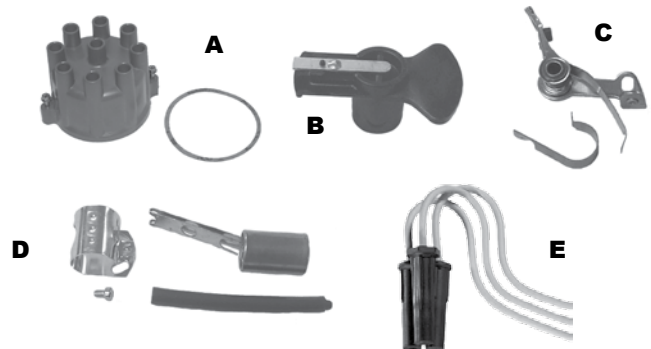
MARINE DISTRIBUTOR REPLACEMENT PARTS

GM PRESTOLITE V8 (POINTS TYPE) IGNITION W/ CLIP DOWN CAP



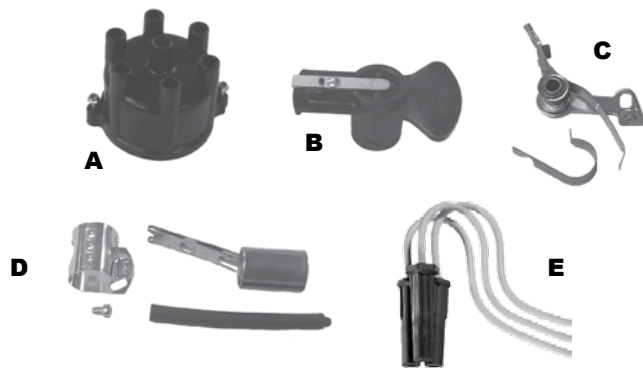
Ref. #	Part#	Description:
A	18-5369	Distributor cap
B	18-5407	Rotor
C	18-5303	Points
D	18-5347	Condenser
E	MAG801	Wire set
F	18-5277	Complete kit includes: A, B, C, D

GM PRESTOLITE V8 (POINTS TYPE) IGNITION W/ SCREW DOWN CAP



Ref. #	Part#	Description:
A	18-5352	Distributor cap
B	18-5407	Rotor
C	18-5303	Points
D	18-5347	Condenser
E	MAG801	Wire set
F	18-5275	Complete kit includes: A, B, C, D

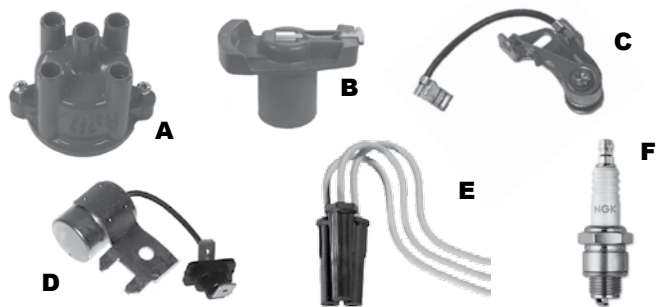
GM PRESTOLITE V6 (POINTS TYPE) IGNITION W/ SCREW DOWN CAP



Ref. #	Part#	Description:
A	18-5353	Distributor cap
B	18-5407	Rotor
C	18-5303	Points
D	18-5347	Condenser
E	MAG604	Wire set
F	18-5262	Complete kit includes: A, B, C, D

VOLVO 4 CYLINDER BOSCH IGNITION

"MODELS AQ125 A & B, AQ131 A, B, C, & D, AQ140A, AQ145A, & AQ151 A, B, C, 230 A & B, 250 A & B"



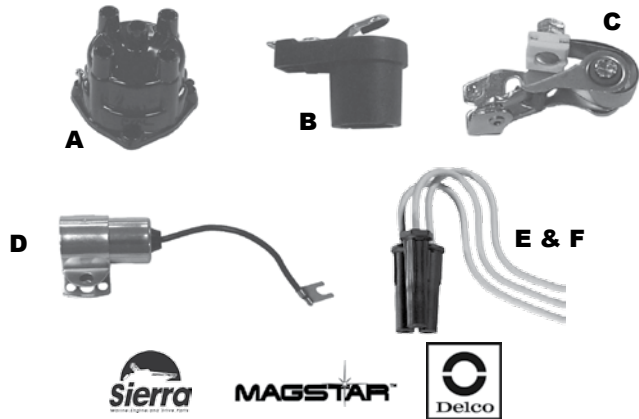
Ref. #	Part#	Description:
A	18-5358	Distributor cap
B	18-5428	Rotor
C	18-5305	Points
D	18-5349	Condenser
E	MAG404	Wire set
F	NGKBP6ES	Spark plug (x4)
G	18-5284	Complete kit includes: A, B, C, D

MARINE IGNITION COMPONENTS

MARINE DISTRIBUTORS REPLACEMENT PARTS

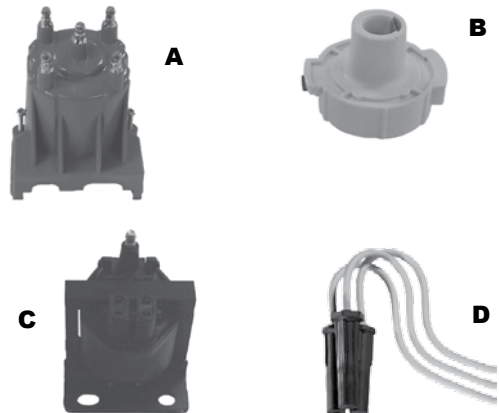


DELCO 4 CYLINDER (POINTS TYPE) IGNITION



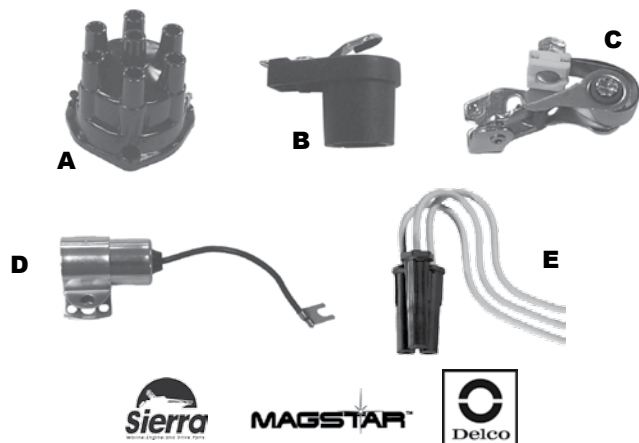
Ref. #	Part#	Description:
A	18-5385	Distributor cap
B	18-5418	Rotor
C	18-5311	Points
D	18-5345	Condenser
E	MAG401	Wire set, 3.0 Liter
F	MAG402	Wire set, 3.7 Liter
G	18-5268	Complete kit includes: A, B, C, D

DELCO 4 CYLINDER ELECTRONIC IGNITION



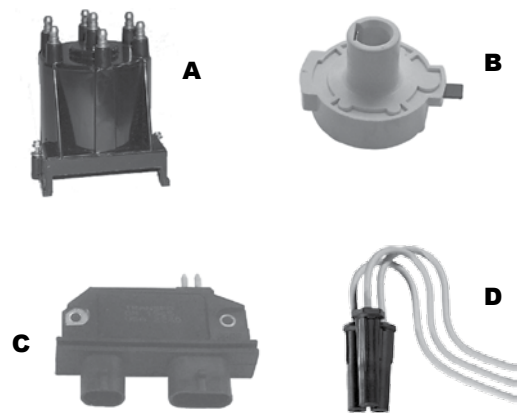
Ref. #	Part#	Description:
A	18-5361	Distributor cap
B	18-5406	Rotor
C	18-5443	Coil
D	MAG405	Wire set
E	MAL9-29320	Cap & Rotor kit

DELCO 6 CYLINDER (POINTS TYPE) IGNITION



Ref. #	Part#	Description:
A	18-5386	Distributor cap
B	18-5418	Rotor
C	18-5311	Points
D	18-5345	Condenser
E	MAG602	Wire set
F	18-5250	Complete kit includes: A, B, C, D

DELCO 6 CYLINDER ELECTRONIC IGNITION PRIOR TO 2002



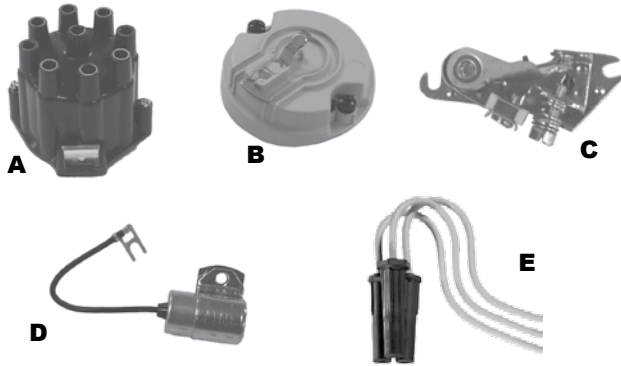
Ref. #	Part#	Description:
A	18-5362	Distributor cap
B	18-5408	Rotor
C	18-5107-1	Ignition module
D	MAG405	Wire set
E	MAL9-29321	Cap & Rotor kit



MARINE IGNITION COMPONENTS

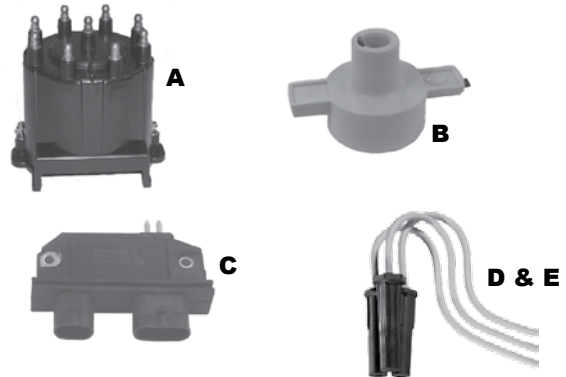
MARINE DISTRIBUTOR REPLACEMENT PARTS

DELCO V8 (POINTS TYPE) IGNITION



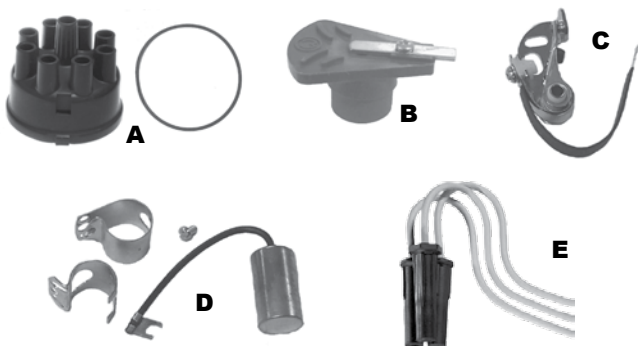
Ref. #	Part#	Description:
A	18-5384	Distributor cap
B	18-5419	Rotor
C	18-5310	Points
D	18-5344	Condenser
E	MAG801	Wire set
F	18-5252	Complete kit includes: A, B, C, D

DELCO V8 ELECTRONIC IGNITION PRIOR TO 2002



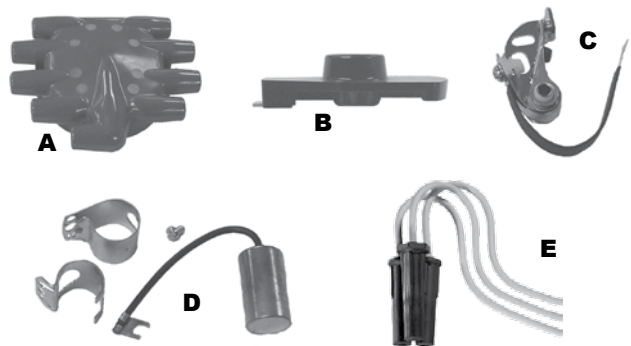
Ref. #	Part#	Description:
A	18-5354	Distributor cap
B	18-5405	Rotor
C	18-5107-1	Points
D	MAG803	Wire set, for most V8's
E	MAG809	Wire set for Crusader 454XL
F	MAL9-29308	Cap & Rotor kit

MALLORY V8 TALL CAP (POINTS TYPE) IGNITION



Ref. #	Part#	Description:
A	18-5376	Distributor cap
B	18-5404-1	Rotor
C	18-5314	Points
D	18-5338	Condenser
E	MAG801	Wire set
F	18-5251	Complete kit includes: A, B, C, D

MALLORY V8 FLAT CAP (POINTS TYPE) IGNITION



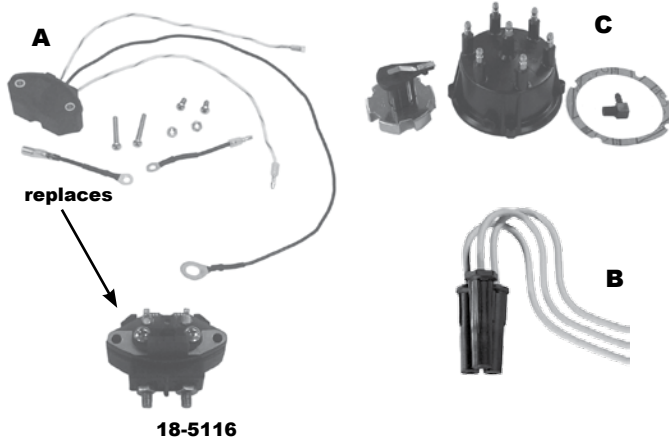
Ref. #	Part#	Description:
A	18-5375	Distributor cap
B	18-5411	Rotor
C	18-5314	Points
D	18-5338	Condenser
E	MAG806	Wire set
F	18-5256	Complete kit includes: A, B, C, D

MARINE IGNITION COMPONENTS

MARINE DISTRIBUTORS REPLACEMENT PARTS

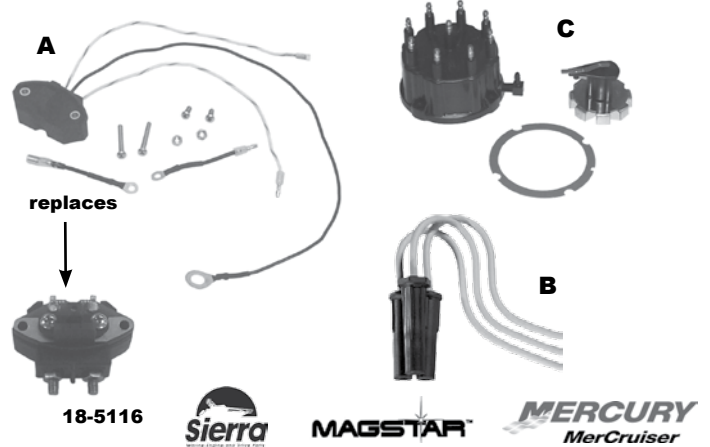


MERCURISER V6 ELECTRONIC IGNITION (THUNDERBOLT)



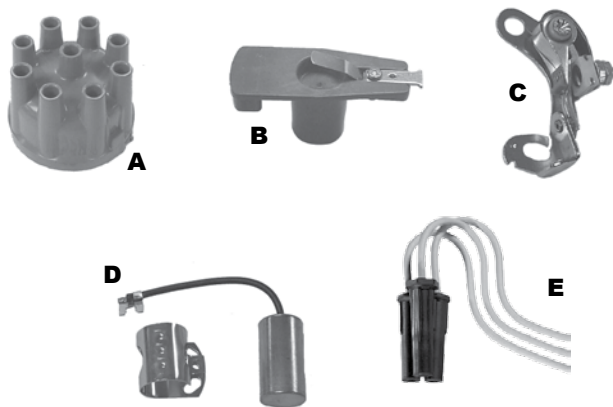
Ref. #	Part#	Description:
A	18-5116-1	Sensor bullet & nut connector, replaces 87-861780A2 & 87-861780Q4
B	MAG601	Wire set, Thunderbolt
C	18-5274	Cap, Rotor, & Trigger wheel

MERCURISER V8 ELECTRONIC IGNITION (THUNDERBOLT)



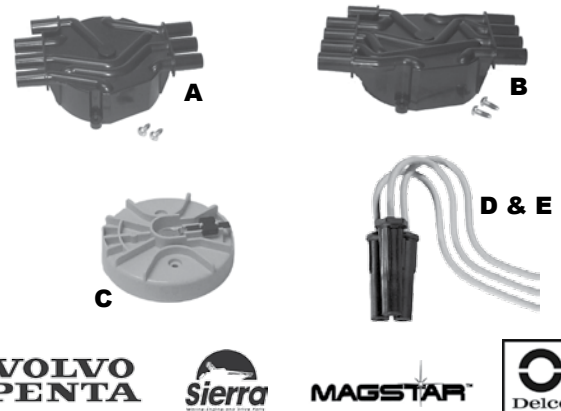
Ref. #	Part#	Description:
A	18-5116-1	Sensor bullet & nut connector, replaces 87-861780A2 & 87-861780Q4
B	MAG804	Wire set, Thunderbolt
C	18-5273	Standard Cap, Rotor, & Trigger wheel
C	18-5249	Premium Cap, Rotor, & Trigger wheel

MERCURISER V8 AUTOLITE IGNITION



Ref. #	Part#	Description:
A	18-5389	Distributor cap
B	18-5420	Rotor
C	18-5317	Points
D	18-5346	Condenser
E	MAG801	Wire set

LATEST VERSION "CRAB STYLE" DELCO STYLE ELECTRONIC IGNITION 2003 & NEWER



Ref. #	Part#	Description:
A	18-5243	Distributor cap, V6
B	18-5244	Distributor cap, V8
C	18-5245	Rotor, V6 & V8
D	MAG606	Wire set, V6
E	MAG813	Wire set, V8
F	MAL9-29319	V6 Cap & Rotor Kit
G	MAL9-29318	V8 Cap & Rotor Kit



MARINE IGNITION COMPONENTS

MARINE IGNITION COILS



Part#
18-5434

Description:

For breaker point ignition, Prestolite PRS5-60, Chrysler Inboard 201522, 2495531, Crusader Inboard 41080, use with a external resistor



Part#
MAL9-29700

Description:

Coil, use with external resistor, replaces Mercruiser 32193A2 & Sierra 18-5433 coil with point type distributors, use with a external resistor



Part#
MAL9-29701

Description:

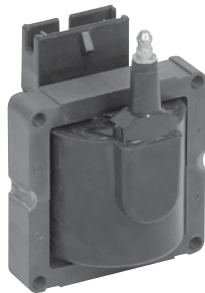
For Mercruiser Thunderbolt IV & V electronic "HEI" ignition systems, Replacement for Mercruiser Inboard/ Outboard #'s 392-7803A 4 & 392-805570A 2, Sierra 18-5438



Part#
MAL9-29703

Description:

Coil, replaces Crusader 41080 & chrysler 200691 has internal resistor same as Sierra 18-5435 & Prestolite5-10



Part#
MAL9-29704

Description:

Replaces OMC 987680, 3854161, fits 5.0L & 5.8L Cobra with EFI 1993-95



Part#
MAL9-29716

Description:

"High output" coil, chrome, 12v, use w/ mallory "YLM" series electronic ignition distributors



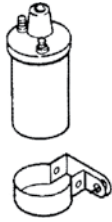
Part#
BAR61-2025

Description:

Delco ignition systems, pre 2002, replaces mercruiser 806673T, T1, Sierra 18-5442, & mallory 9-29708

MARINE IGNITION COMPONENTS

MARINE IGNITION COIL & WIRE BRACKETS & SENSORS



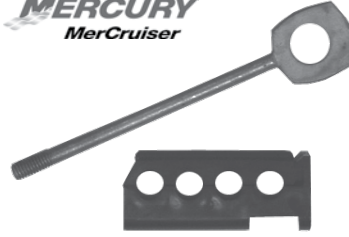
MERCURY
MerCruiser



Part#
65970T1

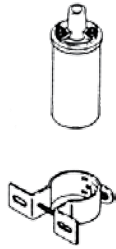
Description:
Coil bracket, single bolt mount

MERCURY
MerCruiser



Part#
1690096A1

Description:
Ignition wire divider
with stud



Crusader
ENGINES



Part#
CRU41063

Description:
Coil bracket, 2 bolt mounting

MERCURY
MerCruiser



Part#
5472821

Description:
Ignition wire divider,
use with stud

Sierra
Marine Engine Parts Division



Part#
18-7600

Description:
Temperature sensor,
replaces 805218T

MERCURY
MerCruiser



Part#
32784

Description:
Standard Ignition wire
divider

Sierra
Marine Engine Parts Division



Part#
18-7632

Description:
Idle air control motor,
replaces 805224A1

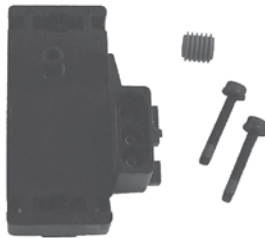
Sierra
Marine Engine Parts Division



Part#
18-7630

Description:
Throttle position
sensor, replaces
805226A1

Sierra
Marine Engine Parts Division



Part#
18-7680

Description:
Map sensor, replaces
805217A1 & 864856A1

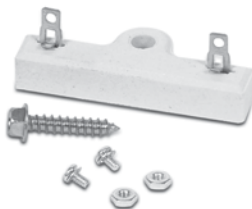
Sierra
Marine Engine Parts Division



Part#
18-7670

Description:
PCV valve, replaces
13712

Mallory
MARINE TECHNOLOGY



Part#
MAL9-29900

Description:
Chrysler, COIL RESISTOR
Replaces: Chrysler 4106140
& others

Sierra
Marine Engine Parts Division



Part#
18-5451

Description:
Chrysler, DUAL COIL RESISTOR
Replaces: Chrysler
3874767



MARINE IGNITION COMPONENTS

MARINE SPARK PLUG WIRE SETS

MAGSTAR™

"LIFETIME WARRANTY"



MFG	Description:	Part#
OMC		
4 Cyl.	100, 110, 120, 140 / 2.5, 3.0L w/ conv. ign.	MAG401
4 Cyl.	3.0L high output w/ elect. ignition	MAG405
6 Cyl.	All in-line 6 cylinder engines	MAG602
6 Cyl.	3.8, 4.3L w/ conventional ignition	MAG604
6 Cyl.	4.3L (262) w/ elect. ignition	MAG601
8 Cyl.	370, 454, 502 w/ conventional ignition	MAG801
8 Cyl.	175, 185, 190, 200 / 5.0, 5.7L GM *	MAG801
8 Cyl.	225, 230, 235, 240, 250, 260 *	MAG801
* EXCEPT W/ MALLORY FLAT TOP DISTRIBUTOR CAP		
8 Cyl.	All w/ mallory flat top (side term.) cap	MAG806
8 Cyl.	5.0L (302), 5.8L (351) w/ conv. ignition	MAG806
8 Cyl.	5.0L (302), 5.8L (351) w/ elect. ignition	MAG803
8 Cyl.	460 king cobra	MAG811
8 Cyl.	8.1L / 496	MAG814
OMC OUTBOARD SETS		
6 Cyl.	90, 115 HP outboards	MAG15-OM115
6 Cyl.	150, 175 HP outboards	MAG15-OM175
PLEASURECRAFT (PCM)		
8 Cyl.	All w/ top term. distributor cap except 454	MAG801
8 Cyl.	All w/ mallory flat top distributor cap	MAG806
8 Cyl.	5.0, 5.7L new style distributor (2002 & up)	MAG813
8 Cyl.	7.4L / 454 CID w/ electronic ignition	MAG809
8 Cyl.	8.1L / 496	MAG814
VOLVO PENTA		
4 Cyl.	All 4 cylinder engines	MAG404
6 Cyl.	All V6 engines w/ electronic ignition	MAG604
8 Cyl.	All w/ conv. ignition - top term. dist.cap	MAG801
8 Cyl.	All w/ mallory flat top distributor cap	MAG806
8 Cyl.	8.1L / 496	MAG808
YAMAHA		
6 Cyl.	4.3L w/ electronic ignition	MAG601
8 Cyl.	5.0, 5.7, 7.4L w/ electronic ignition	MAG803

Description:	Part#
OMC OUTBOARDS (JOHN / EVINRUDE)	
4" lead for johnson / evinrude	MAG15-OM-04
6" lead for johnson / evinrude	MAG15-OM-06
9" lead for johnson / evinrude	MAG15-OM-09
12" lead for johnson / evinrude	MAG15-OM-12
Universal set for johnson / evinrude	MAG15-U2M

MFG	Description:	Part#
CHRIS CRAFT		
6 Cyl.	All 6 cylinder engines	MAG602
8 Cyl.	350 w/ top terminal dist. cap	MAG801
8 Cyl.	350 w/ flat top dist. cap	MAG806
CHRYSLER		
6 Cyl.	229 V6	MAG604
8 Cyl.	273, 318, 340, 360 small block	MAG605
8 Cyl.	360, 383, 400, 440 big block	MAG606
CRUSADER		
6 Cyl.	262 w/ conventional ignition	MAG604
6 Cyl.	229, 262 (4.3L) V6 w/ elec. ignition	MAG601
8 Cyl.	302, 351 ford	MAG801
8 Cyl.	All GM w. conventional ignition	MAG810
8 Cyl.	All GM w/ elect. ignition - old style dist.	MAG803
8 Cyl.	5.0, 5.7L new style dist. (2002 & up)	MAG813
8 Cyl.	454XL, 454XL (HO), 502XL	MAG809
8 Cyl.	8.1L / 496	MAG808
INDMAR, FLAGSHIP, MASTERCRAFT, MARINE POWER		
6 Cyl.	262 w/ conventional ignition	MAG604
6 Cyl.	262 (4.3L) V6 w/ elect. ignition	MAG601
8 Cyl.	302, 351 ford	MAG801
8 Cyl.	305, 350 GM w/ conventional ignition	MAG801
8 Cyl.	305, 350, 454 GM w/ elect. ignition	MAG803
8 Cyl.	454, 502 GM w/ conventional Ignition	MAG810
8 Cyl.	454, 502 GM w/ elect. ignition	MAG809
8 Cyl.	8.1L / 496	MAG808
MERCUISER		
4 Cyl.	110, 120, 140, 3.0 LX w/ conv. Ignition	MAG401
4 Cyl.	120, 140, 3.0 LX w/ elect. Ignition	MAG405
4 Cyl.	470, 485, 488, 3.7L	MAG402
6 Cyl.	140, 150, 160, 165	MAG602
6 Cyl.	185 (229 cubic inches)	MAG604
6 Cyl.	4.3L w/ elect. ignition & old style dist.	MAG601
6 Cyl.	4.3L w/ new crab cap (2002 & up)	MAG606
8 Cyl.	All w/ conv. ignition - top term dist. cap	MAG801
8 Cyl.	All w/ conv. ignition & flat top dist. cap	MAG806
8 Cyl.	All w/ elect. ignition except 454 hi perf.	MAG804
8 Cyl.	454 high performance w/ elect. ignition	MAG809
8 Cyl.	8.1L / 496	MAG808
8 Cyl.	5.0, 5.7L new crab cap (2002 & up)	MAG813

Description:	Part#
MERCURY OUTBOARDS (MERCURY, MARINER, FORCE)	
5" lead for mercury, mariner, & force	MAG15-MM-05
7" lead for mercury, mariner, & force	MAG15-MM-17
9" lead for mercury, mariner, & force	MAG15-MM-09
12" lead for mercury, mariner, & force	MAG15-MM-12
Universal set for mercury, mariner, & force	MAG15-U1M